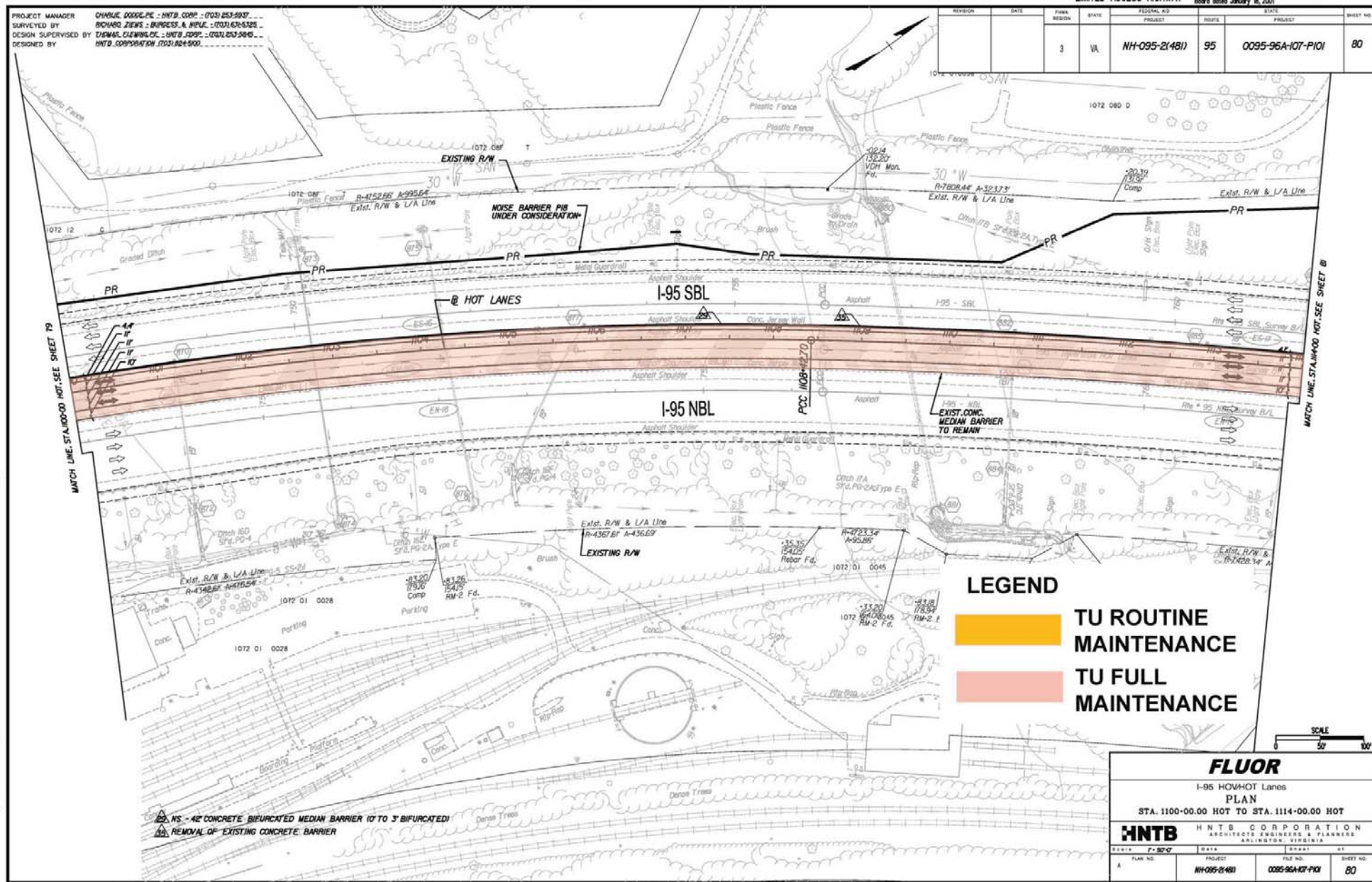


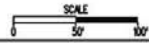
PROJECT MANAGER CHARLIE DOUGLASS - HNTB CORP. - (703) 253-9937
SURVEYED BY RICHARD ZIEGLER - BURGESS & NIPER - (703) 431-5325
DESIGN SUPERVISED BY DAWMAS ELEVINGOR - HNTB CORP. - (703) 253-5845
DESIGNED BY HNTB CORPORATION (703) 824-9000

REVISION	DATE	FHWA REGION	STATE	FEDERAL AID PROJECT	ROUTE	STATE PROJECT	SHEET NO.
		3	VA	NH-095-2(481)	95	0095-96A-107-PI01	80



LEGEND

- TU ROUTINE MAINTENANCE
- TU FULL MAINTENANCE



No.	Date	Description

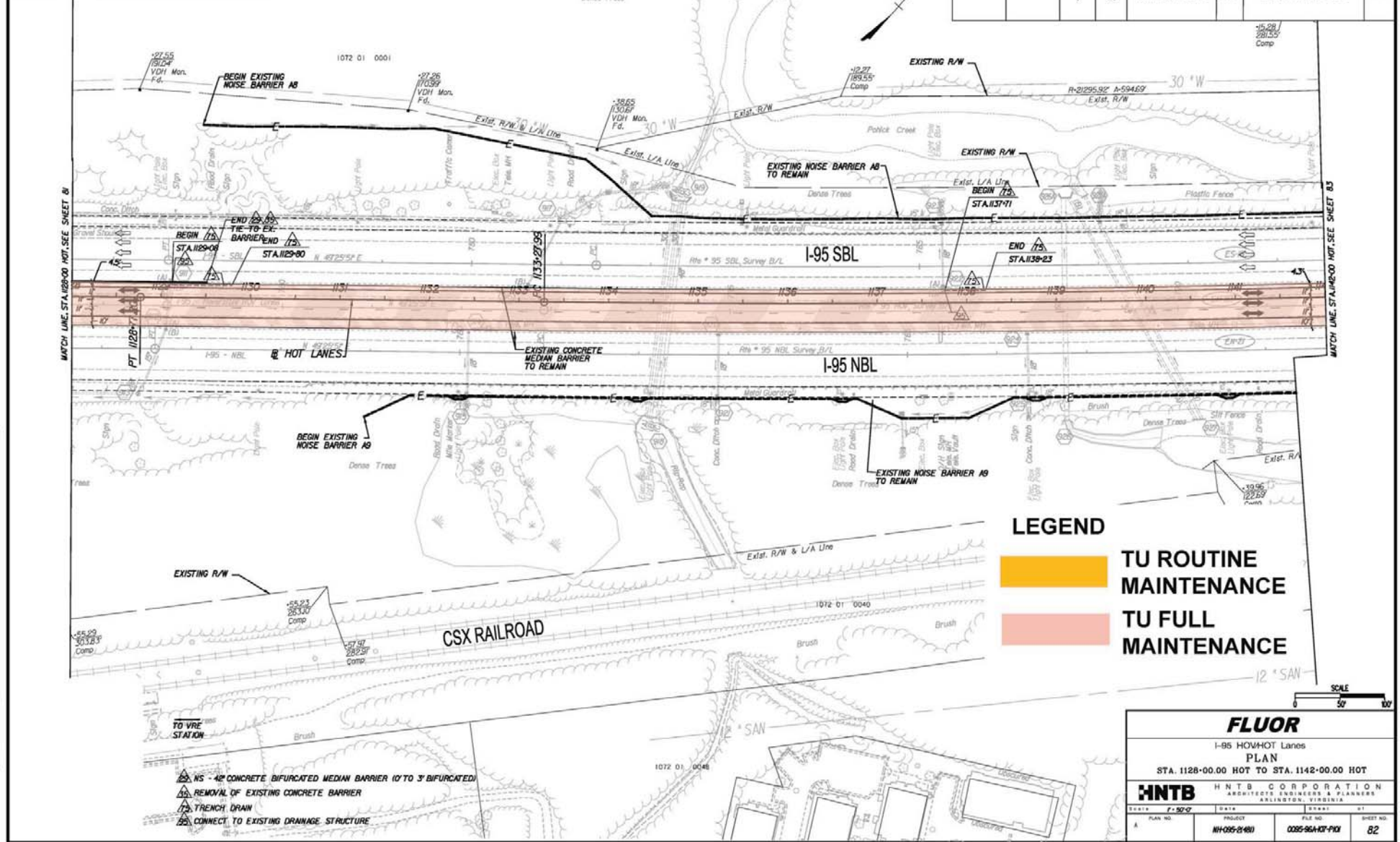
NS - 42" CONCRETE BIFURCATED MEDIAN BARRIER (10 TO 3' BIFURCATED)
 RA - REMOVAL OF EXISTING CONCRETE BARRIER

FLUOR			
I-95 HOV-HOT Lanes			
PLAN			
STA. 1100-00.00 HOT TO STA. 1114-00.00 HOT			
HNTB		HNTB CORPORATION	
ARCHITECTS ENGINEERS & PLANNERS		ARLINGTON, VIRGINIA	
SCALE	PROJECT	FILE NO.	SHEET NO.
A 1-50'-0"	NH-095-2(481)	0095-96A-107-PI01	80

P:\P\100000\210\210000.dwg
 9/16/2011 10:25:50 PM
 Pen Table - Velux\00\ood\00\ketch\work\app\agency\DOT_V\0\N\Prj\00\00\38683\F\09-09-11.dwg

REVISION	DATE	FHWA REGION	STATE	FEDERAL AID PROJECT	ROUTE	STATE PROJECT	SHEET NO.
		3	VA	NH-095-2(481)	95	0095-96A-107-PI01	82

PROJECT MANAGER CHARLIE DODGE, P.E. - HNTB CORP. - (703) 253-9937
 SURVEYED BY RICHARD ZIEGLER - BURGESS & NIELSEN - (703) 431-8328
 DESIGN SUPERVISED BY THOMAS ELLIOTT, P.E. - HNTB CORP. - (703) 253-9645
 DESIGNED BY HNTB CORPORATION (703) 884-9000



Rev.	Date	Description

- NS - 4" CONCRETE BIFURCATED MEDIAN BARRIER (0' TO 3' BIFURCATED)
- REMOVAL OF EXISTING CONCRETE BARRIER
- TRENCH DRAIN
- CONNECT TO EXISTING DRAINAGE STRUCTURE

LEGEND

TU ROUTINE MAINTENANCE

TU FULL MAINTENANCE

FLUOR

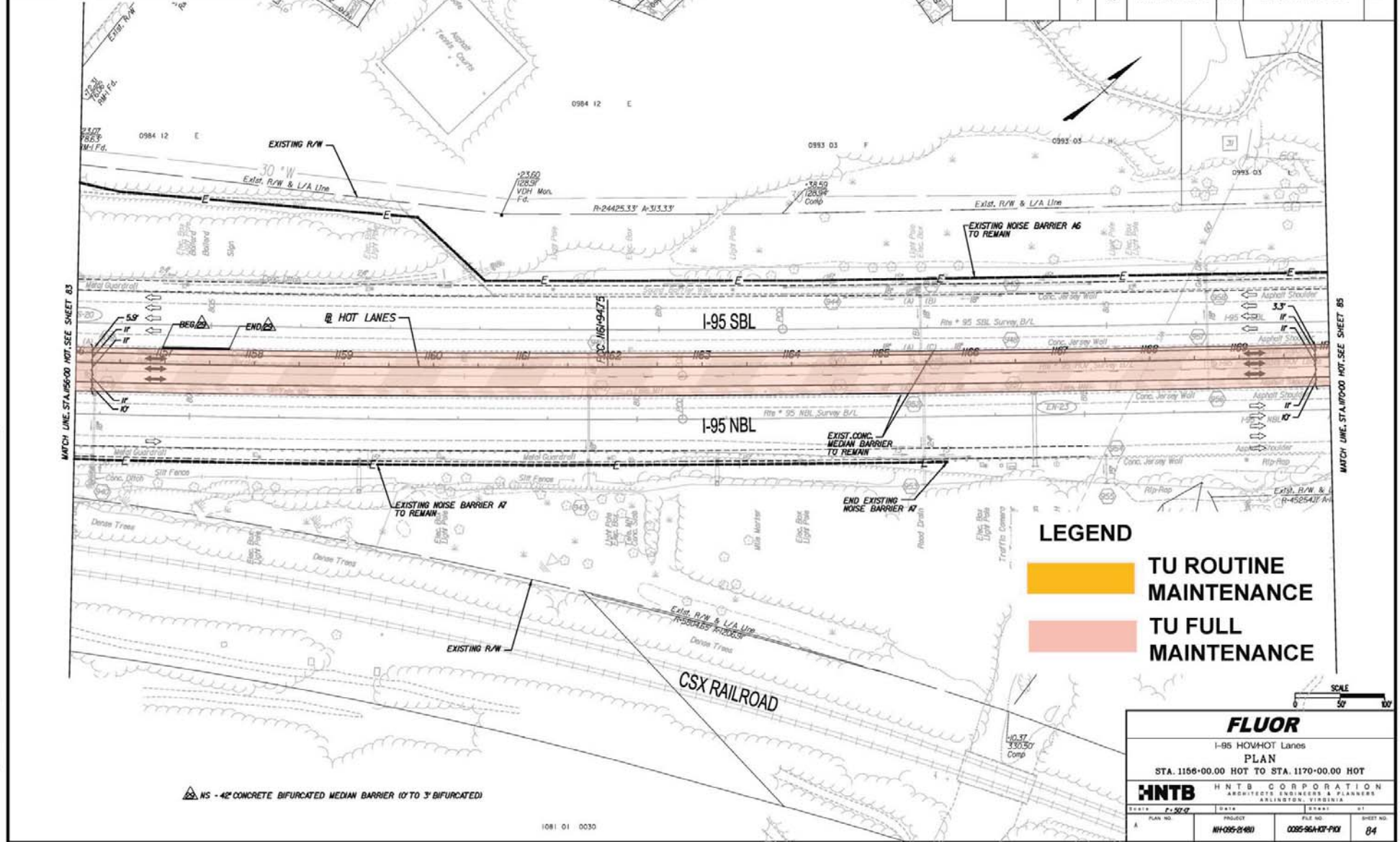
I-95 HOV/HOT Lanes
 PLAN
 STA. 1128+00.00 HOT TO STA. 1142+00.00 HOT

HNTB HNTB CORPORATION
 ARCHITECTS ENGINEERS & PLANNERS
 ARLINGTON, VIRGINIA

SCALE: 1"=50'	DATE: 1/15/09	DRAWN BY: [blank]	CHECKED BY: [blank]
PLAN NO. A	PROJECT: NH-095-2(481)	FILE NO.: 0095-96A-107-PI01	SHEET NO.: 82

REVISION	DATE	ISSUE REGION	STATE	FEDERAL AID PROJECT	ROUTE	STATE PROJECT	SHEET NO.
		3	VA	NH-095-2(481)	95	0095-96A-107-PI01	84

PROJECT MANAGER CHARLIE DODD-PC - HNTB CORP. - (703) 253-5937
 SURVEYED BY RICHARD ZIEMAS - BURGESS & NIELSEN - (703) 431-8328
 DESIGN SUPERVISED BY THOMAS CLEWING-PC - HNTB CORP. - (703) 253-5945
 DESIGNED BY HNTB CORPORATION (703) 884-9000



Rev.	Date	Description

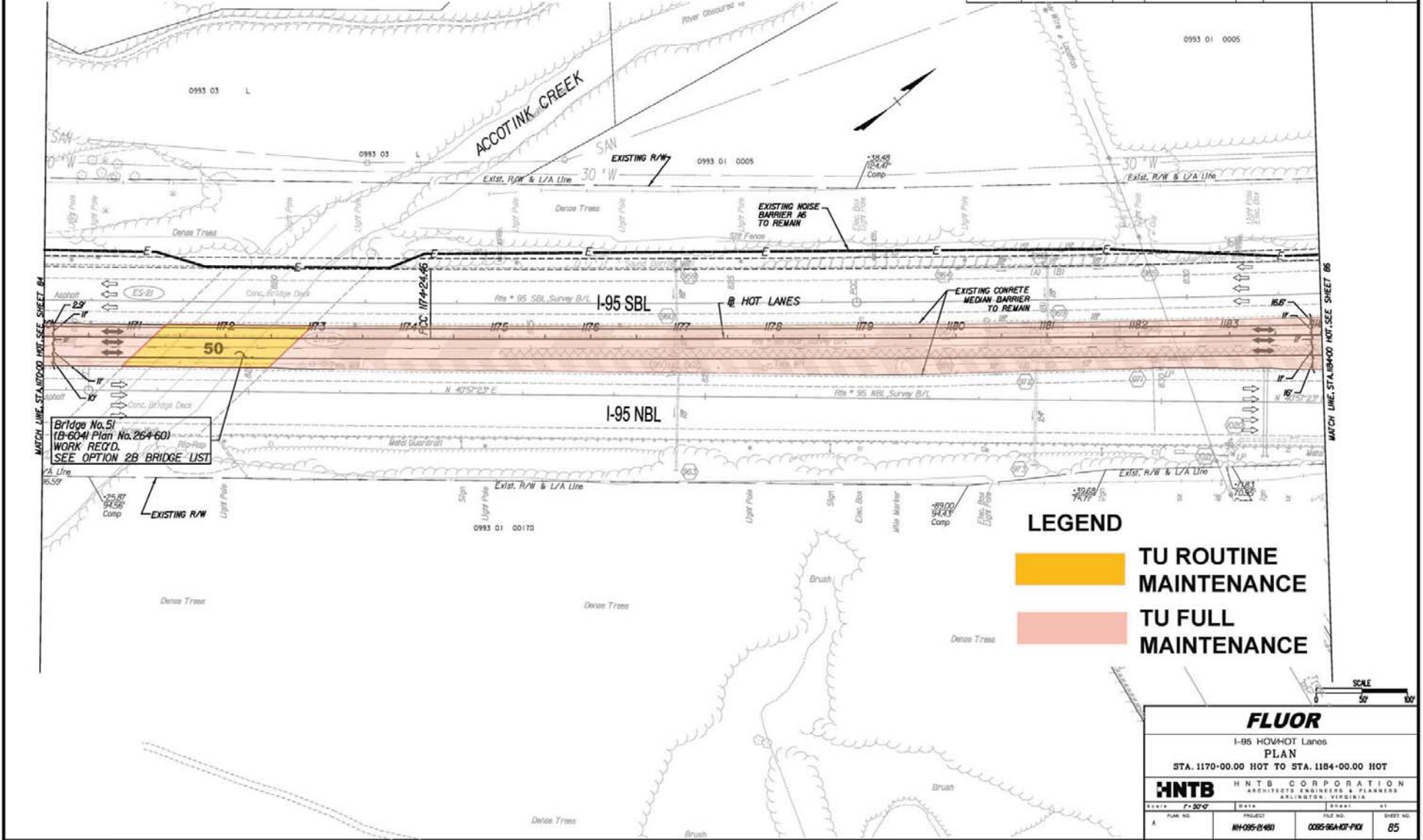
FLUOR
 I-95 HOV/HOT Lanes
 PLAN
 STA. 1156-00.00 HOT TO STA. 1170-00.00 HOT

HNTB HNTB CORPORATION
 ARCHITECTS ENGINEERS & PLANNERS
 ARLINGTON, VIRGINIA

SCALE	1" = 50'-0"
PLAN NO.	NH-095-2(481)
PROJECT	0095-96A-107-PI01
FILE NO.	84

PROJECT MANAGER CHARLIE DODD, PE - HNTB, CORP. - (703) 253-5937
SURVEYED BY RICHARD ZIEGLER, SURVEYOR & HNTB, CORP. - (703) 253-5937
DESIGN SUPERVISED BY EDWARD E. WELLS, PE - HNTB, CORP. - (703) 253-5937
DESIGNED BY HNTB CORPORATION (703) 253-5900

REVISION	DATE	FEDERAL AID	STATE	FEDERAL AID PROJECT	STATE PROJECT	SHEET NO.
		3	VA	NH-095-2(481)	95	0095-96A-107-P101
						85



Bridge No. 51
(B-604) Plan No. 264-60
WORK REQ'D.
SEE OPTION 2B BRIDGE LIST

LEGEND

- TU ROUTINE MAINTENANCE
- TU FULL MAINTENANCE

SCALE 1" = 50'

FLUOR

I-95 HOV-HOT Lanes
PLAN
STA. 1170+00.00 HOT TO STA. 1184+00.00 HOT

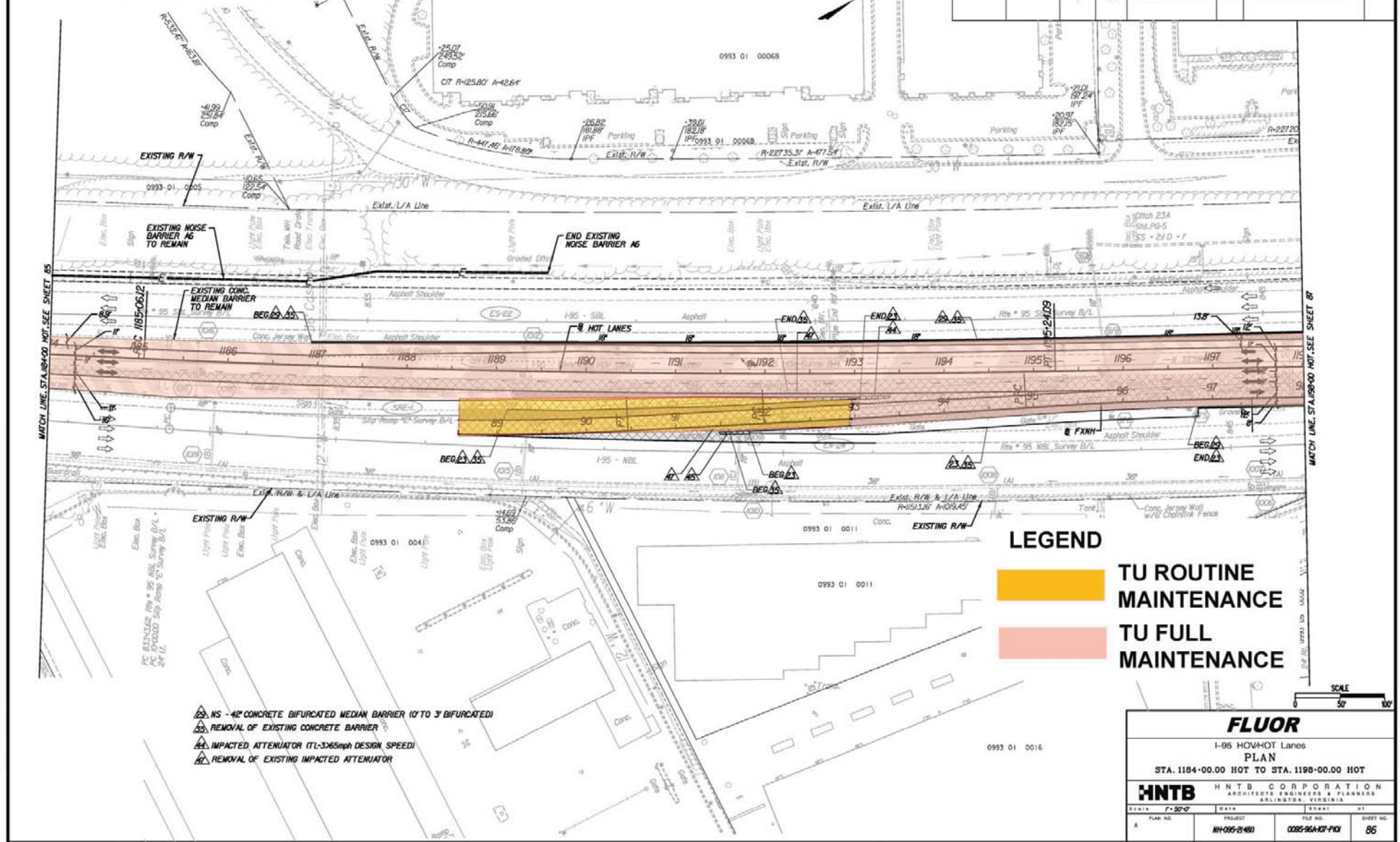
HNTB HNTB CORPORATION
ARCHITECTS, ENGINEERS & PLANNERS
ARLINGTON, VIRGINIA

SHEET	R-50-C	DATE	09/11/11
PLAN NO.	NH-095-2(481)	PROJECT	0095-96A-107-P101
SHEET NO.		FILE NO.	85

Rev.	Date	Description

REVISION	DATE	FEDERAL AID REGION	STATE	FEDERAL AID PROJECT	ROUTE	STATE PROJECT	SHEET NO.
		3	VA	NH-095-2(481)	95	0095-96A-107-PI01	86

PROJECT MANAGER: CHARLIE DODGE, PE - HNTB, CORP. - (703) 253-5937
 SURVEYED BY: RICHARD ZIEKS - BURDESS & HUBLE, INC. - (703) 431-5125
 DESIGN SUPERVISED BY: EDWARD E. LEWIS, PE - HNTB, CORP. - (703) 253-5815
 DESIGNED BY: HNTB CORPORATION (703) 824-9000

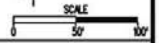


Rev.	Date	Description

LEGEND

- TU ROUTINE MAINTENANCE
- TU FULL MAINTENANCE

- NS - 42" CONCRETE BIFURCATED MEDIAN BARRIER (0' TO 3' BIFURCATED)
- REMOVAL OF EXISTING CONCRETE BARRIER
- IMPACTED ATTENUATOR (TL-3265mph DESIGN SPEED)
- REMOVAL OF EXISTING IMPACTED ATTENUATOR

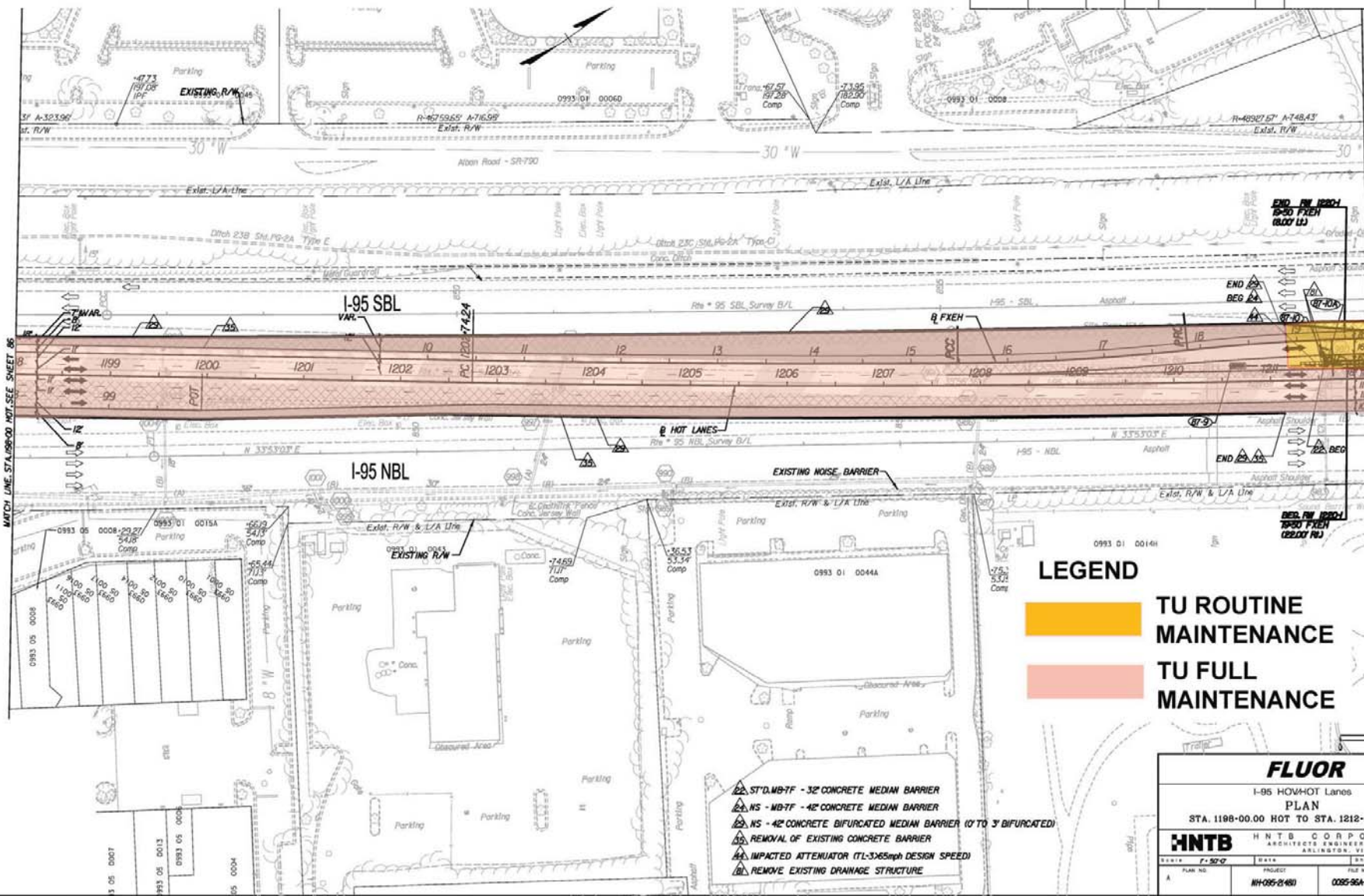


FLUOR			
I-95 HOV/HOT Lanes			
PLAN			
STA. 1184+00.00 HOT TO STA. 1198+00.00 HOT			
HNTB		HNTB CORPORATION	
ARCHITECTS, ENGINEERS & PLANNERS		ARLINGTON, VIRGINIA	
SCALE	DATE	DRAWN	BY
A	PLAN NO.	PROJECT	FILE NO.
	NH-095-2(481)	0095-96A-107-PI01	86

LIMITED ACCESS HIGHWAY By Resolution of Commonwealth Transportation Board dated January 18, 2001

REVISION	DATE	PLAN REGION	STATE	FEDERAL AID PROJECT	ROUTE	STATE PROJECT	SHEET NO.
		3	VA	NH-095-2(481)	95	0095-96A-107-PI01	87

PROJECT MANAGER CHARLIE DOOLEY, PE - HNTB CORP. - (703) 253-9937
 SURVEYED BY RICHARD ZIEKS - BURGESS & NIPLE - (703) 431-5125
 DESIGN SUPERVISED BY EDWARD ELEMORE, PE - HNTB CORP. - (703) 253-5845
 DESIGNED BY HNTB CORPORATION (703) 824-9000



LEGEND

- TU ROUTINE MAINTENANCE
- TU FULL MAINTENANCE

- △ STD MB-7F - 32" CONCRETE MEDIAN BARRIER
- △ NS - MB-7F - 42" CONCRETE MEDIAN BARRIER
- △ NS - 42" CONCRETE BIFURCATED MEDIAN BARRIER (0 TO 3' BIFURCATED)
- △ REMOVAL OF EXISTING CONCRETE BARRIER
- △ IMPACTED ATTENUATOR (TL-3:65mph DESIGN SPEED)
- △ REMOVE EXISTING DRAINAGE STRUCTURE

FLUOR

I-95 HOV/HOT Lanes
PLAN
 STA. 1198-00.00 HOT TO STA. 1212-00.00 HOT

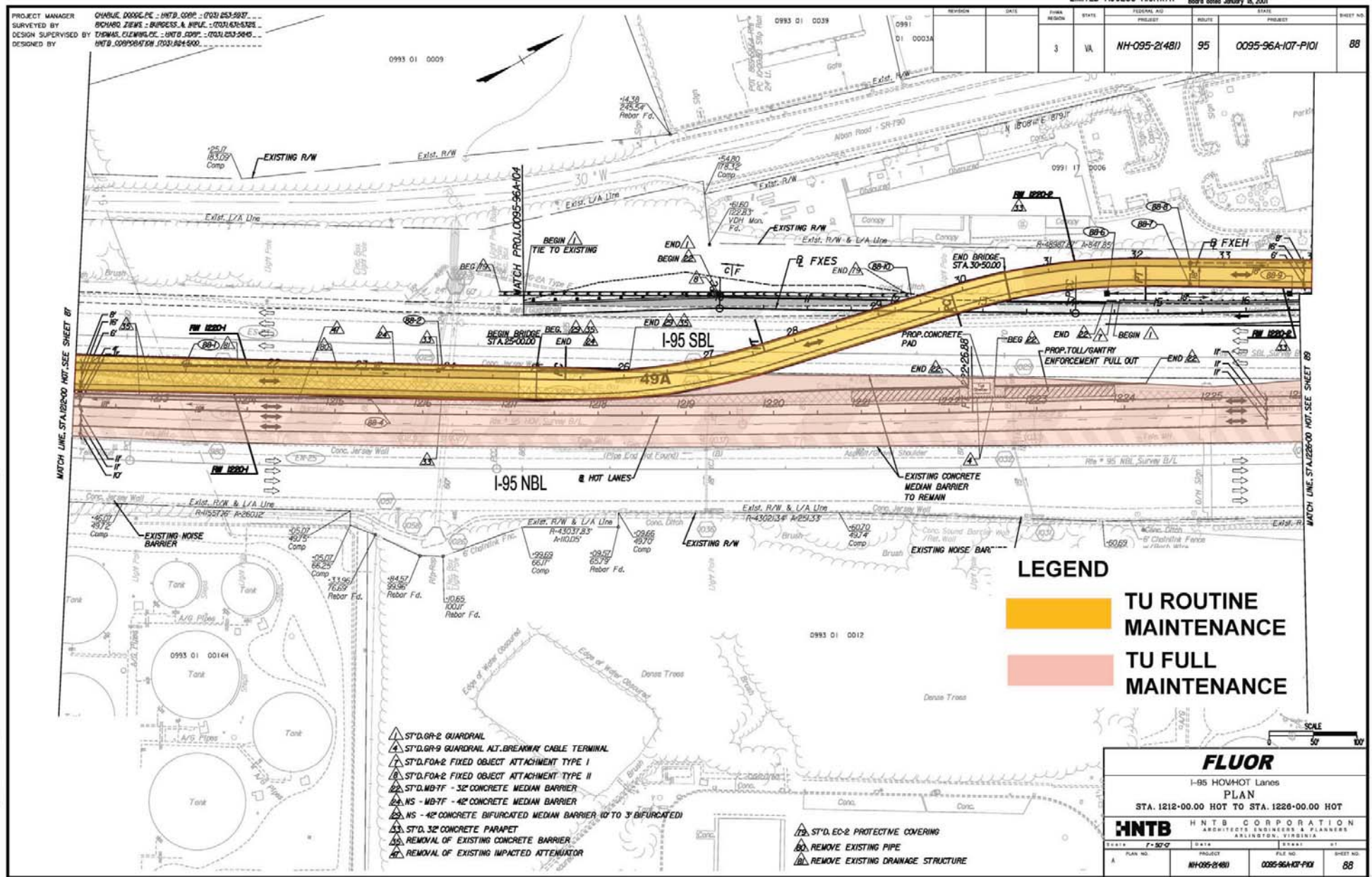
HNTB HNTB CORPORATION
 ARCHITECTS, ENGINEERS & PLANNERS
 ARLINGTON, VIRGINIA

SCALE	1" = 50'-0"		
PLAN NO.	PROJECT	FILE NO.	SHEET NO.
A	NH-095-2(481)	0095-96A-107-PI01	87

Rev.	Date	Description

PROJECT MANAGER CHARLIE DOUGHERTY - HNTB CORP. - (703) 253-9937
 SURVEYED BY RICHARD ZIEGLER - BURGESS & NIELSEN - (703) 431-4328
 DESIGN SUPERVISED BY THOMAS CLEWING, P.E. - HNTB CORP. - (703) 253-5645
 DESIGNED BY HNTB CORPORATION (703) 884-9000

REVISION	DATE	FEDERAL AID PROJECT	STATE PROJECT	FEDERAL AID PROJECT	STATE PROJECT	SHEET NO.
						88



Rev.	Description

- ST'D.GR-2 GUARDRAIL
- ST'D.GR-9 GUARDRAIL ALT. BREAKWAY CABLE TERMINAL
- ST'D.FOA-2 FIXED OBJECT ATTACHMENT TYPE I
- ST'D.FOA-2 FIXED OBJECT ATTACHMENT TYPE II
- ST'D.MB-7F - 32" CONCRETE MEDIAN BARRIER
- NS - MB-7F - 42" CONCRETE MEDIAN BARRIER
- NS - 42" CONCRETE BIFURCATED MEDIAN BARRIER (0 TO 3' BIFURCATED)
- ST'D.32 CONCRETE PARAPET
- REMOVAL OF EXISTING CONCRETE BARRIER
- REMOVAL OF EXISTING IMPACT ATTENUATOR
- ST'D.EC-2 PROTECTIVE COVERING
- REMOVE EXISTING PIPE
- REMOVE EXISTING DRAINAGE STRUCTURE

LEGEND

TU ROUTINE MAINTENANCE

TU FULL MAINTENANCE

FLUOR

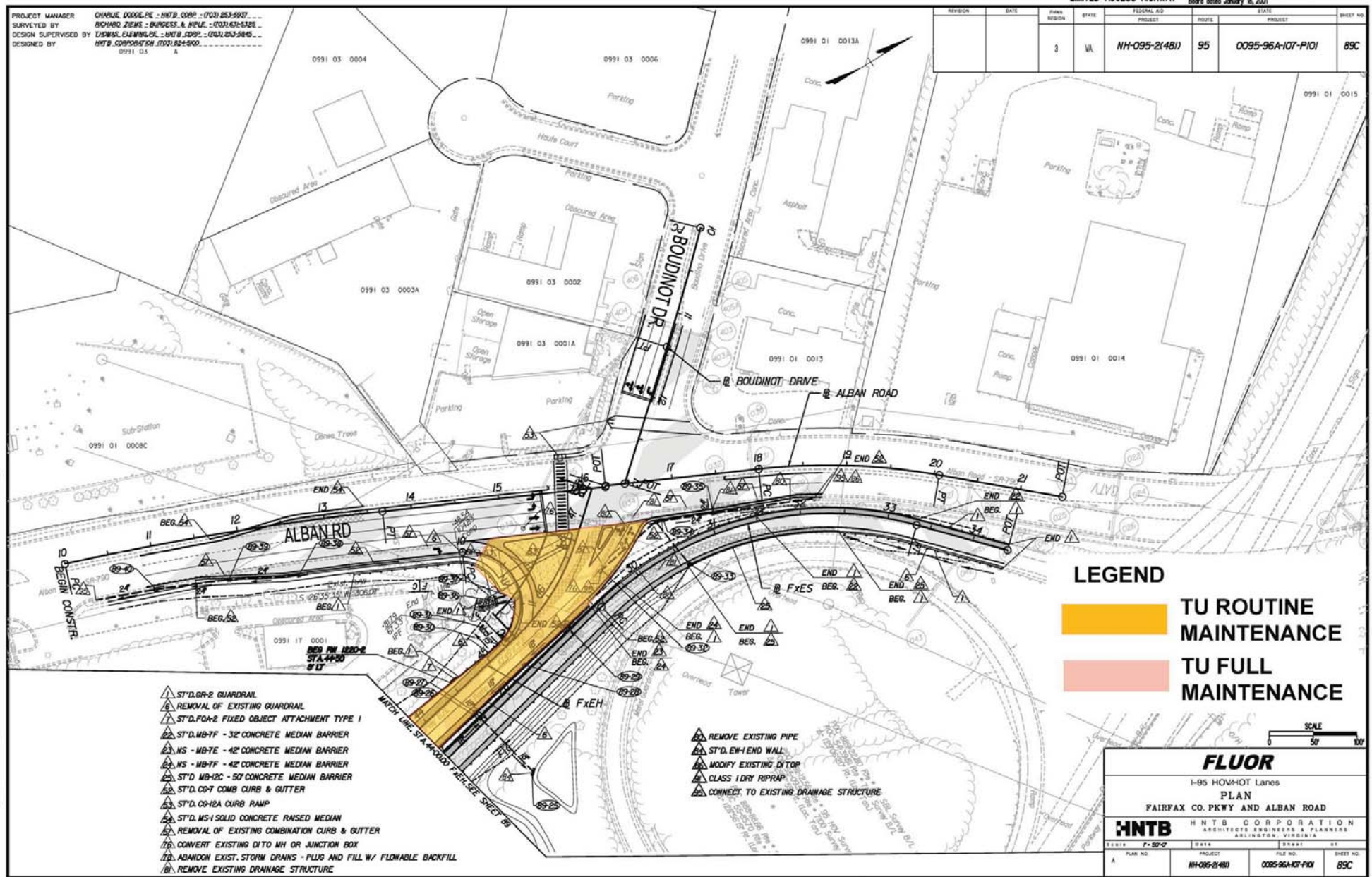
I-95 HOV/HOT Lanes
 PLAN
 STA. 1212+00.00 HOT TO STA. 1226+00.00 HOT

HNTB HNTB CORPORATION
 ARCHITECTS, ENGINEERS & PLANNERS
 ARLINGTON, VIRGINIA

DATE: 7-20-07	DATE:	DATE:	DATE:
PLAN NO. A	PROJECT: NH-095-2(481)	FILE NO.: 0095-96A-107-PI01	SHEET NO.: 88

REVISION	DATE	FEDERAL AID PROJECT	STATE PROJECT	FEDERAL AID PROJECT	STATE PROJECT	SHEET NO.
3	VA	NH-095-2(481)	95	0095-96A-107-PI01	89C	

PROJECT MANAGER CHARLIE DOUGHERTY - HNTB CORP. - (703) 253-9977
 SURVEYED BY RICHARD ZIEGLER - BURGESS & NIELSEN - (703) 431-6328
 DESIGN SUPERVISED BY EDWARD ELLIOTT - HNTB CORP. - (703) 253-5845
 DESIGNED BY HNTB CORPORATION (703) 254-9000
 0991 03 0004
 0991 03 0006
 0991 03 0002A
 0991 03 0002
 0991 03 0001A
 0991 01 0013
 0991 01 0014
 0991 01 0015
 0991 01 0008c
 0991 17 0001
 BEG. PVI 1000+0
 STA. 4+400
 8' LT



Rev.	Date	Description

- ▲ ST'D. GR-2 GUARDRAIL
- ▲ REMOVAL OF EXISTING GUARDRAIL
- ▲ ST'D. FOA-2 FIXED OBJECT ATTACHMENT TYPE 1
- ▲ ST'D. MB-7F - 32" CONCRETE MEDIAN BARRIER
- ▲ NS - MB-7E - 42" CONCRETE MEDIAN BARRIER
- ▲ NS - MB-7F - 42" CONCRETE MEDIAN BARRIER
- ▲ ST'D. MB-12C - 50" CONCRETE MEDIAN BARRIER
- ▲ ST'D. CO-7 COMB CURB & GUTTER
- ▲ ST'D. CO-12A CURB RAMP
- ▲ ST'D. WS-1 SOLID CONCRETE RAISED MEDIAN
- ▲ REMOVAL OF EXISTING COMBINATION CURB & GUTTER
- ▲ CONVERT EXISTING DIT TO MH OR JUNCTION BOX
- ▲ ABANDON EXIST. STORM DRAINS - PLUG AND FILL W/ FLOWABLE BACKFILL
- ▲ REMOVE EXISTING DRAINAGE STRUCTURE

- ▲ REMOVE EXISTING PIPE
- ▲ ST'D. EW-1 END WALL
- ▲ MODIFY EXISTING DITOP
- ▲ CLASS 1 DRY RIPRAP
- ▲ CONNECT TO EXISTING DRAINAGE STRUCTURE

LEGEND

TU ROUTINE MAINTENANCE

TU FULL MAINTENANCE

SCALE
 0 50' 100'

FLUOR
 I-95 HOV-3 Lanes
 PLAN
 FAIRFAX CO. PKWY AND ALBAN ROAD

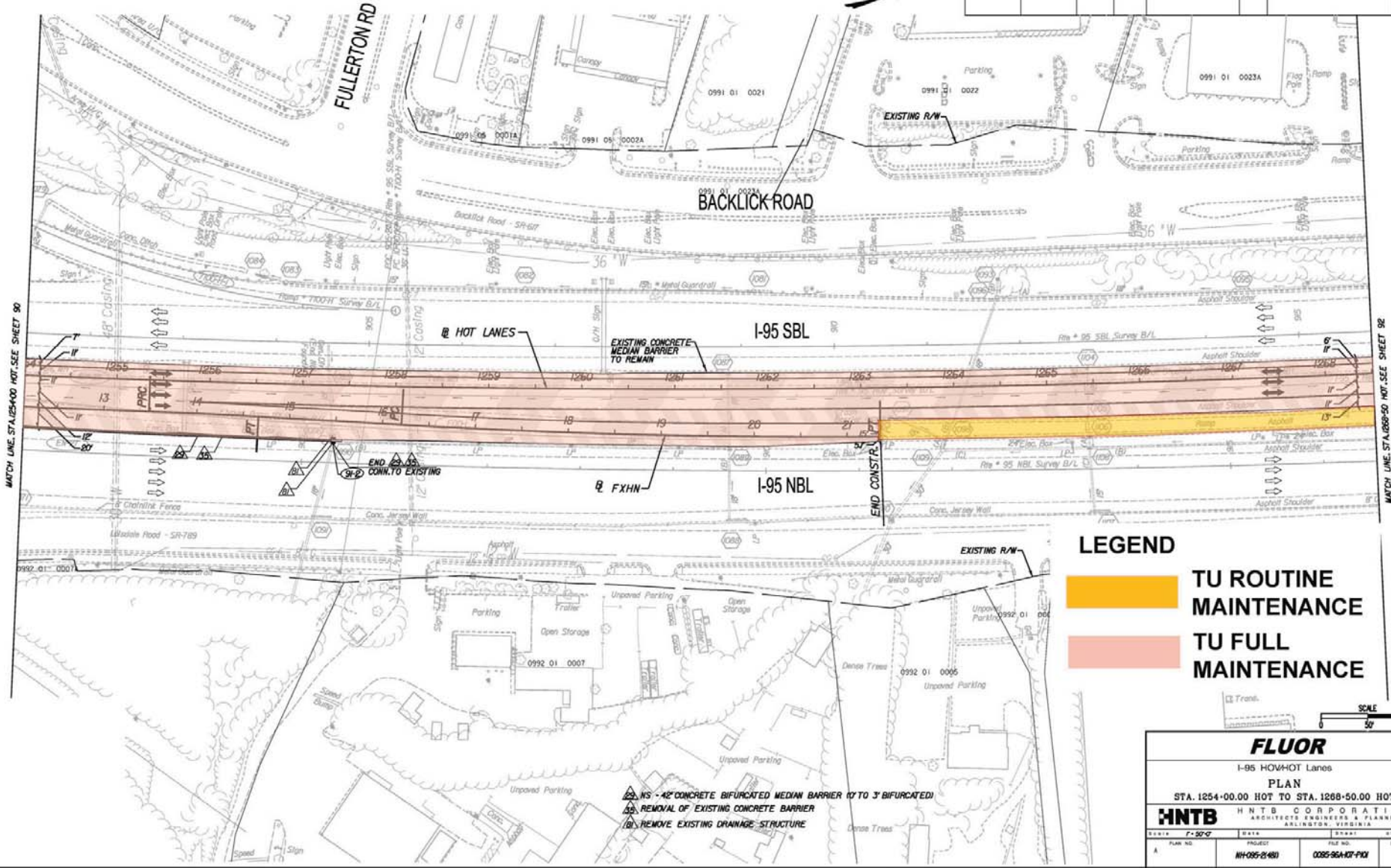
HNTB HNTB CORPORATION
 ARCHITECTS ENGINEERS & PLANNERS
 ARLINGTON, VIRGINIA

DATE	1-20-09	DRAWN BY	BT
PLAN NO.	A	PROJECT	NH-095-2(481)
		FILE NO.	0095-96A-107-PI01
		SHEET NO.	89C

LIMITED ACCESS HIGHWAY By Resolution of Commonwealth Transportation Board dated January 18, 2001

REVISION	DATE	FEDERAL AID REGION	STATE	FEDERAL AID PROJECT	STATE PROJECT	SHEET NO.
		3	VA	NH-095-2(481)	95 0095-96A-107-PI01	91

PROJECT MANAGER: CHARLIE DOOLEY, PE - HNTB, CORP. - (703) 253-5937
 SURVEYED BY: RICHARD ZIEGLER, SURVEYOR & INSPECTION - (703) 431-5125
 DESIGN SUPERVISOR: THOMAS ELLIOTT, PE - HNTB, CORP. - (703) 253-5915
 DESIGNED BY: HNTB CORPORATION (703) 824-9000



Rev.	Date	Description

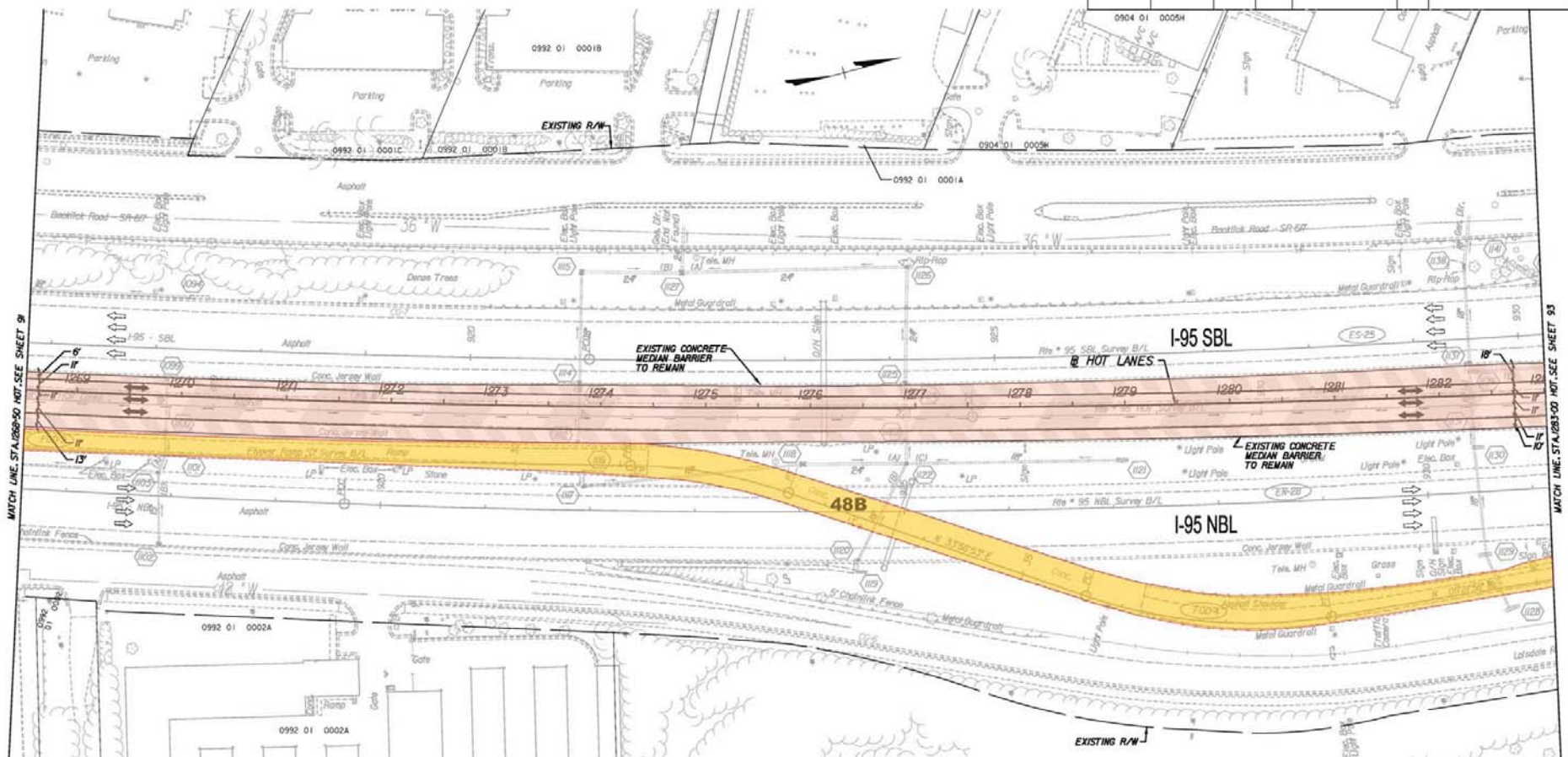
FLUOR
 I-95 HOV-HOT Lanes
 PLAN
 STA. 1254+00.00 HOT TO STA. 1268+50.00 HOT

HNTB HNTB CORPORATION
 ARCHITECTS, ENGINEERS & PLANNERS
 ARLINGTON, VIRGINIA

SCALE	1"=50'-0"	DATE	09/11/2011	DRAWN BY	BT
PLAN NO.	A	PROJECT	NH-095-2(481)	FILE NO.	0095-96A-107-PI01
					SHEET NO. 91

REVISION	DATE	FEDERAL AID	STATE	FEDERAL AID PROJECT	STATE PROJECT	SHEET NO.
3	VA	NH-095-2(481)	95	0095-96A-107-P101	92	

PROJECT MANAGER: CHARLIE DOOLEY, PE - HNTB, CORP. - (703) 253-5937
 SURVEYED BY: RICHARD ZIEGLER, S. BARRETT & HNTB, CORP. - (703) 253-5937
 DESIGN SUPERVISED BY: EDWARD ELLIOTT, PE - HNTB, CORP. - (703) 253-5937
 DESIGNED BY: HNTB CORPORATION (703) 253-5900



Rev.	Date	Description

LEGEND

TU ROUTINE MAINTENANCE

TU FULL MAINTENANCE

SCALE
0" = 50'

FLUOR
 I-95 HOV/HOT Lanes
 PLAN
 STA. 1268-50.00 HOT TO STA. 1283-00.00 HOT

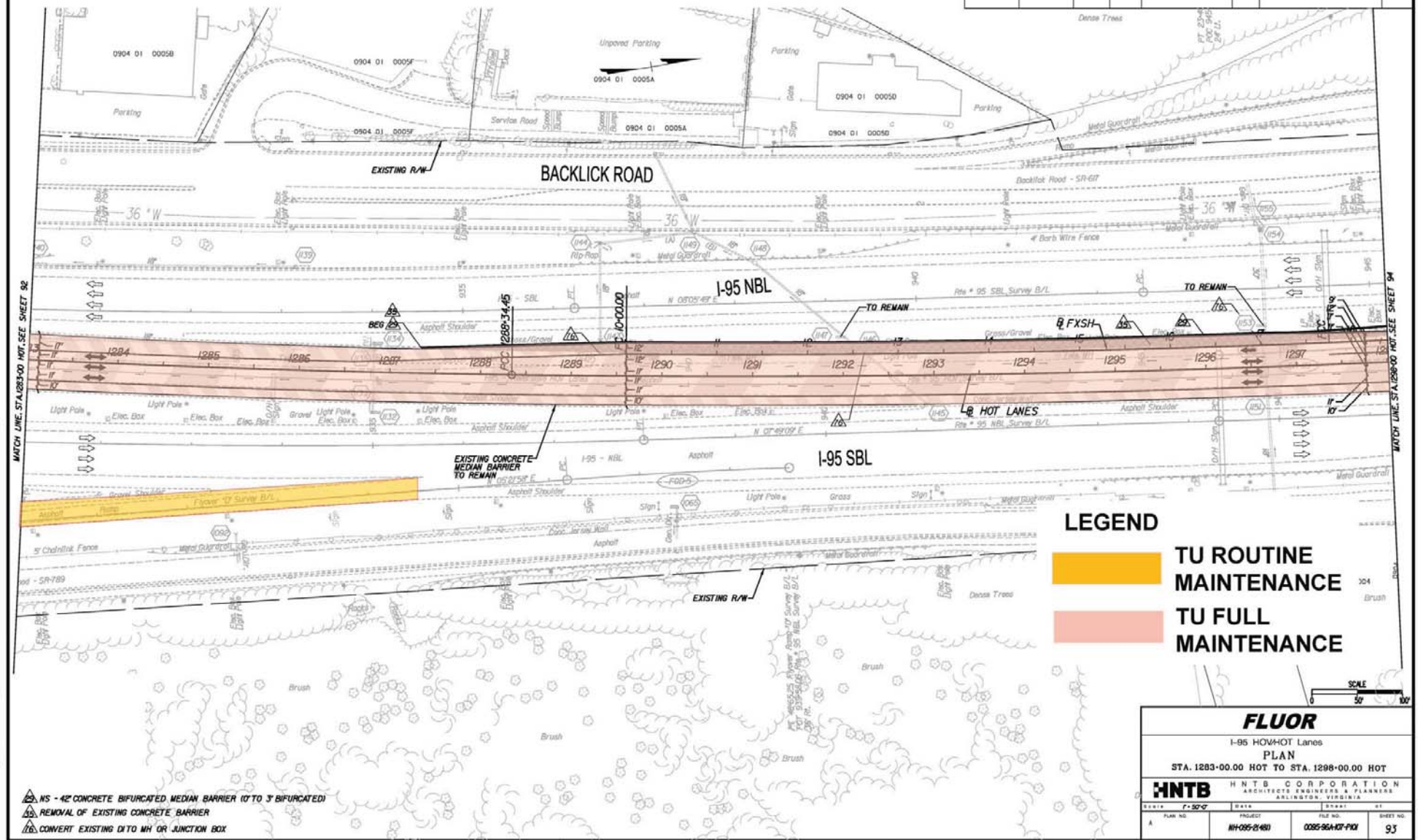
HNTB HNTB CORPORATION
 ARCHITECTS ENGINEERS & PLANNERS
 ARLINGTON, VIRGINIA

PLAN NO.	PROJECT	FILE NO.	SHEET NO.
A	NH-095-2(481)	0095-96A-107-P101	92

LIMITED ACCESS HIGHWAY By Resolution of Commonwealth Transportation Board dated January 18, 2001

REVISION	DATE	PLAN REGION	STATE	FEDERAL AID PROJECT	ROUTE	STATE PROJECT	SHEET NO.
		3	VA	NH-095-2(481)	95	0095-96A-107-PI01	93

PROJECT MANAGER: CHARLIE DOOLEY, PE - HNTB CORP. - (703) 253-9937
 SURVEYED BY: RICHARD ZIEGLER - BURDESS & HUFF - (703) 431-5325
 DESIGN SUPERVISED BY: EDWARD ELEMORE, PE - HNTB CORP. - (703) 253-9845
 DESIGNED BY: HNTB CORPORATION (703) 824-9000



Rev.	Date	Description

LEGEND

TU ROUTINE MAINTENANCE

TU FULL MAINTENANCE

FLUOR

I-95 HOV/HOT Lanes
 PLAN
 STA. 1283+00.00 HOT TO STA. 1298+00.00 HOT

HNTB HNTB CORPORATION
 ARCHITECTS, ENGINEERS & PLANNERS
 ARLINGTON, VIRGINIA

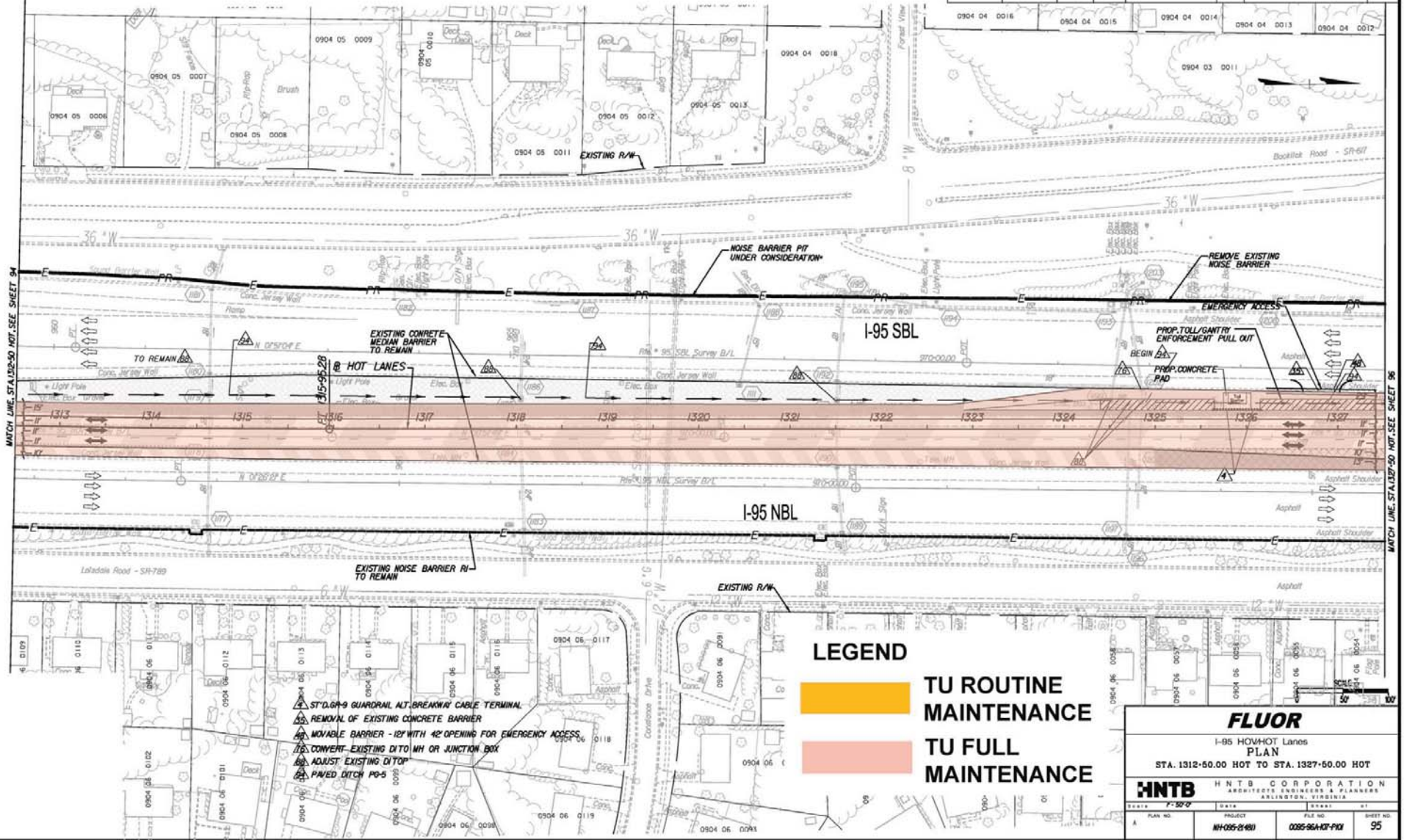
DATE: 7-20-07	DATE:	DATE:	DATE:
PLAN NO.:	PROJECT: NH-095-2(481)	FILE NO.: 0095-96A-107-PI01	SHEET NO.: 93

- △ NS - 42" CONCRETE BIFURCATED MEDIAN BARRIER (0 TO 3 BIFURCATED)
- △ REMOVAL OF EXISTING CONCRETE BARRIER
- △ CONVERT EXISTING DITCH TO MH OR JUNCTION BOX

LIMITED ACCESS HIGHWAY By Resolution of Commonwealth Transportation Board dated January 18, 2001

REVISION	DATE	FHWA REGION	STATE	FEDERAL AID PROJECT	ROUTE	STATE PROJECT	SHEET NO.
		3	VA	NH-095-2(481)	95	0095-96A-107-PI01	95

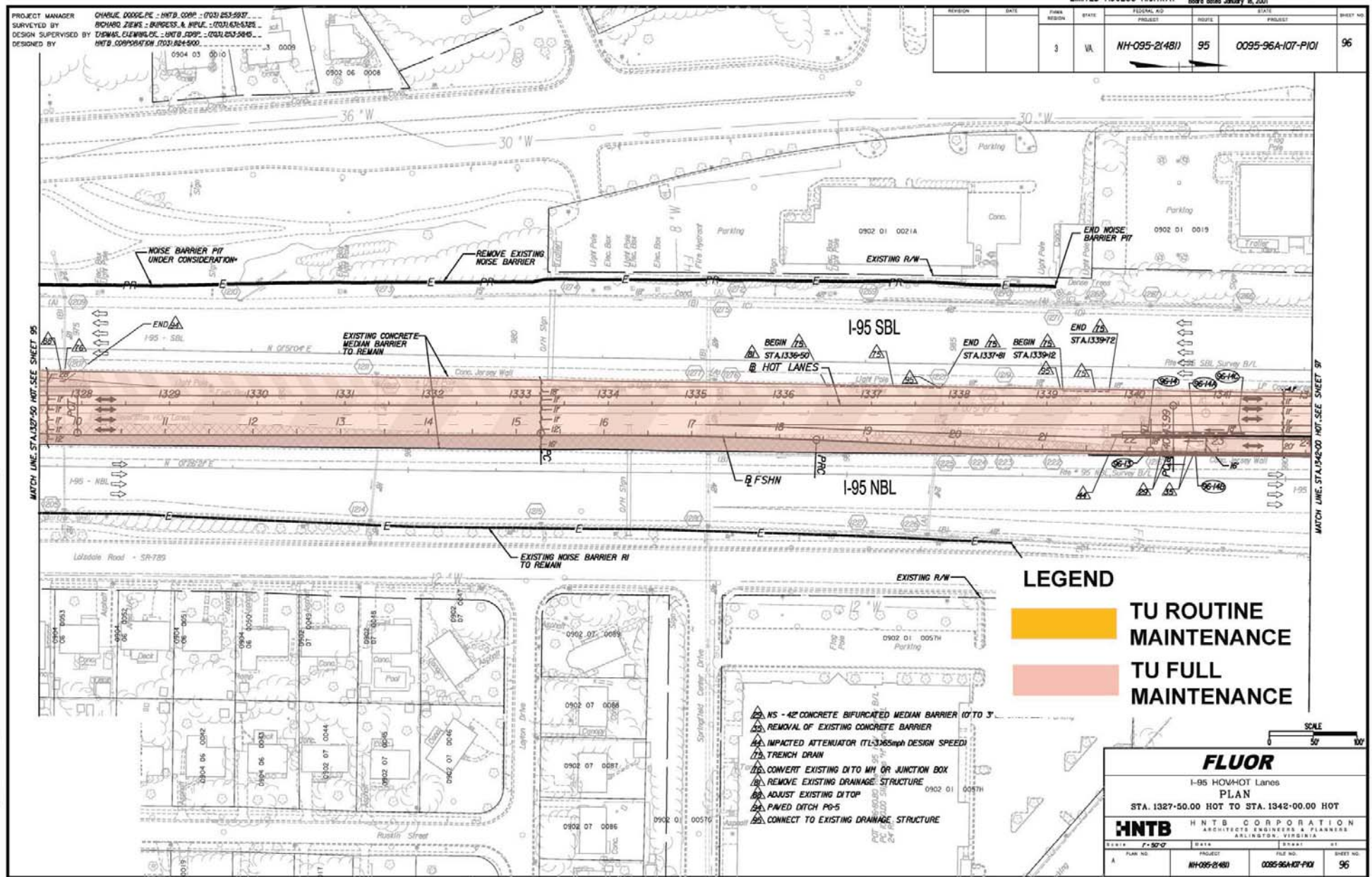
PROJECT MANAGER: CHARLIE DODGE-PC - HNTB, CORP. - (703) 253-9937
 SURVEYED BY: RICHARD ZIEGLER - BURDESS & HUBLE - (703) 431-5128
 DESIGN SUPERVISED BY: THOMAS ELLIOTT-PC - HNTB, CORP. - (703) 253-9945
 DESIGNED BY: HNTB CORPORATION (703) 884-9900



Rev.	Date	Description

REVISION	DATE	FEDERAL AID REGION	STATE	FEDERAL AID PROJECT	STATE PROJECT	SHEET NO.
		3	VA	NH-095-2(481)	95 0095-96A-107-PI01	96

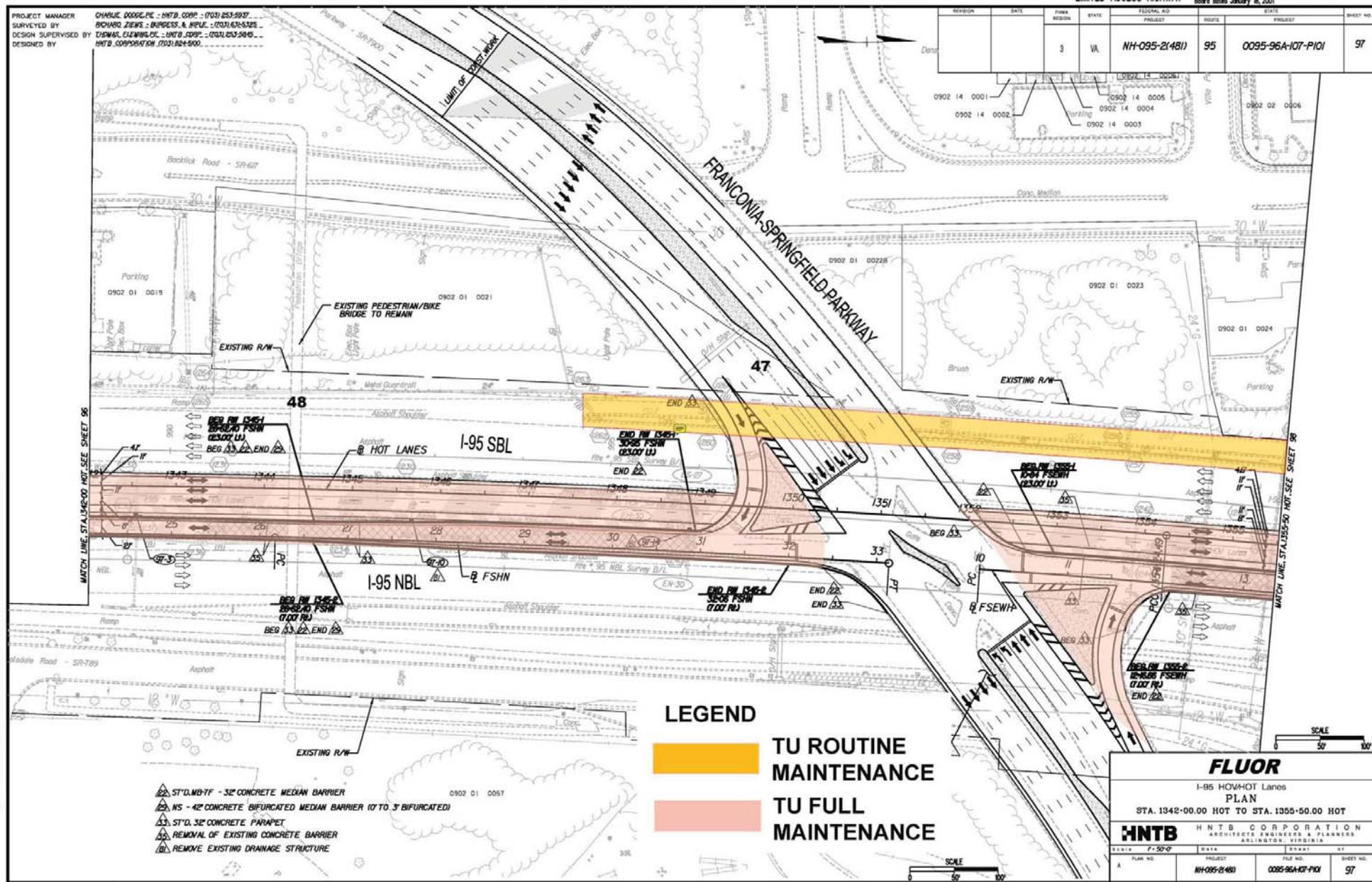
PROJECT MANAGER: CHARLIE DODD, P.E. - HNTB, CORP. - (703) 253-5937
 SURVEYED BY: RICHARD ZIEGLER, S. BURGESS & HIRSH, INC. - (703) 431-6128
 DESIGN SUPERVISED BY: EDWARD ELLIOTT, P.E. - HNTB, CORP. - (703) 253-5945
 DESIGNED BY: HNTB CORPORATION (703) 254-9000



Rev.	Date	Description

REVISION	DATE	PLAN REGION	STATE	FEDERAL AID PROJECT	ROUTE	STATE PROJECT	SHEET NO.
		3	VA	NH-095-2(481)	95	0095-96A-107-PI01	97

PROJECT MANAGER: CHARLIE DODD, P.E. - HNTB, CORP. - (703) 253-5937
 SURVEYED BY: RICHARD ZIEGLER, S. BARRETT & HNTB - (703) 431-5125
 DESIGN SUPERVISED BY: EDWARD ELEMWIG, P.E. - HNTB, CORP. - (703) 253-5915
 DESIGNED BY: HNTB CORPORATION - (703) 824-9000



Rev.	Date	Description

- △ ST'D. M9-TF - 32" CONCRETE MEDIAN BARRIER
- △ NS - 42" CONCRETE BIFURCATED MEDIAN BARRIER (1 TO 3' BIFURCATED)
- △ ST'D. 32" CONCRETE PARAPET
- △ REMOVAL OF EXISTING CONCRETE BARRIER
- △ REMOVE EXISTING DRAINAGE STRUCTURE

LEGEND

TU ROUTINE MAINTENANCE

TU FULL MAINTENANCE

FLUOR

I-95 HOV/HOT Lanes
 PLAN
 STA. 1342-00.00 HOT TO STA. 1355+50.00 HOT

HNTB HNTB CORPORATION
 ARCHITECTS, ENGINEERS & PLANNERS
 ARLINGTON, VIRGINIA

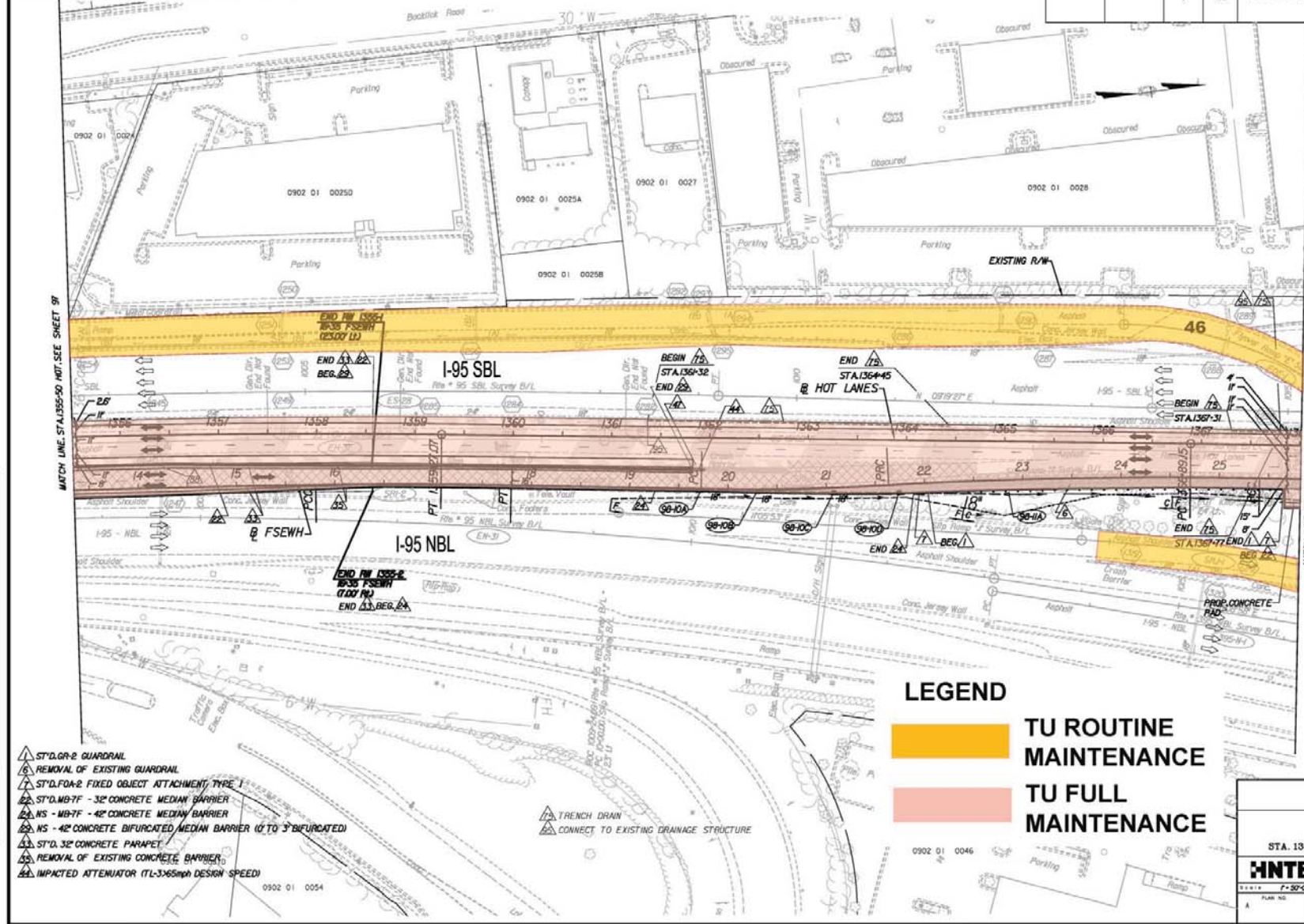
PLAN NO.	DATE	SCALE	SHEET NO.
NH-095-2(481)	0095-96A-107-PI01	97	

LIMITED ACCESS HIGHWAY

By Resolution of Commonwealth Transportation Board dated January 18, 2001

REVISION	DATE	PLAN REGION	STATE	FEDERAL AID PROJECT	STATE PROJECT	SHEET NO.
		3	VA	NH-095-2(481)	95	0095-96A-107-P101
						98

PROJECT MANAGER: CHARLIE DODD-PC - HNTB CORP. - (703) 253-5937
 SURVEYED BY: RICHARD ZIEGLER - BURDESS & HUBLE - (703) 431-5125
 DESIGN SUPERVISED BY: EDWARD ELEMORE, JR. - HNTB CORP. - (703) 253-5845
 DESIGNED BY: HNTB CORPORATION (703) 824-9000

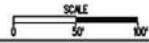


LEGEND

TU ROUTINE MAINTENANCE

TU FULL MAINTENANCE

- ▲ ST'D. GR-2 GUARDRAIL
- ▲ REMOVAL OF EXISTING GUARDRAIL
- ▲ ST'D. FOA-2 FIXED OBJECT ATTACHMENT TYPE 1
- ▲ NS - MB-7F - 32" CONCRETE MEDIAN BARRIER
- ▲ NS - 42" CONCRETE MEDIAN BARRIER
- ▲ NS - 42" CONCRETE BIFURCATED MEDIAN BARRIER (2 TO 3 BIFURCATED)
- ▲ ST'D. 32" CONCRETE PARAPET
- ▲ REMOVAL OF EXISTING CONCRETE BARRIER
- ▲ IMPACTED ATTENUATOR (TL-3-65mph DESIGN SPEED)
- ▲ TRENCH DRAIN
- ▲ CONNECT TO EXISTING DRAINAGE STRUCTURE



FLUOR

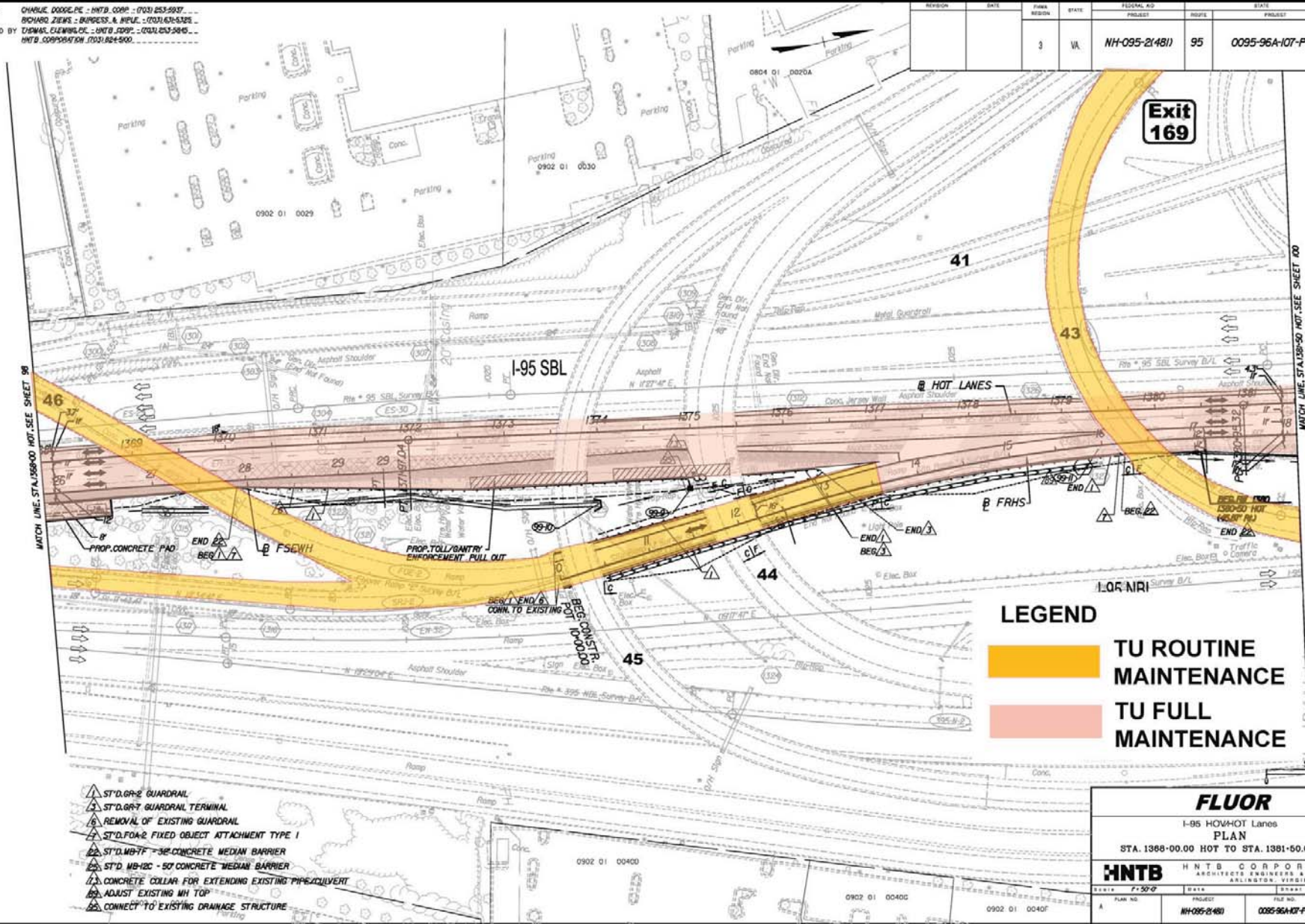
I-95 HOV-HOT Lanes
 PLAN
 STA. 1355+50.00 HOT TO STA. 1368+00.00 HOT

HNTB HNTB CORPORATION
 ARCHITECTS, ENGINEERS & PLANNERS
 ARLINGTON, VIRGINIA

PLAN NO.	PROJECT	FILE NO.	SHEET NO.
A	NH-095-2(481)	0095-96A-107-P101	98

REVISION	DATE	FEDERAL AID	STATE	FEDERAL AID PROJECT	STATE PROJECT	SHEET NO.
		3	VA	NH-095-2(481)	95	0095-96A-107-PI01

PROJECT MANAGER: CHARLIE DOOLEY, PE - HNTB, CORP. - (703) 253-5937
 SURVEYED BY: RICHARD ZIEGLER, SURVEY & MAPPING - (703) 431-5125
 DESIGN SUPERVISED BY: EDWARD ELLIOTT, PE - HNTB, CORP. - (703) 253-5845
 DESIGNED BY: HNTB CORPORATION (703) 824-9000



Rev.	Date	Description

- ▲ ST'D. GR-2 GUARDRAIL
- ▲ ST'D. GR-7 GUARDRAIL TERMINAL
- ▲ REMOVAL OF EXISTING GUARDRAIL
- ▲ ST'D. FOAR-2 FIXED OBJECT ATTACHMENT TYPE I
- ▲ ST'D. MB-7F - 36" CONCRETE MEDIAN BARRIER
- ▲ ST'D. MB-12C - 50" CONCRETE MEDIAN BARRIER
- ▲ CONCRETE COLLAR FOR EXTENDING EXISTING PIPE/CULVERT
- ▲ ADJUST EXISTING MH TOP
- ▲ CONNECT TO EXISTING DRAINAGE STRUCTURE

LEGEND

TU ROUTINE MAINTENANCE

TU FULL MAINTENANCE

FLUOR

I-95 HOV-3 HOT Lanes
 PLAN
 STA. 1368+00.00 HOT TO STA. 1381+60.00 HOT

HNTB HNTB CORPORATION
 ARCHITECTS ENGINEERS & PLANNERS
 ARLINGTON, VIRGINIA

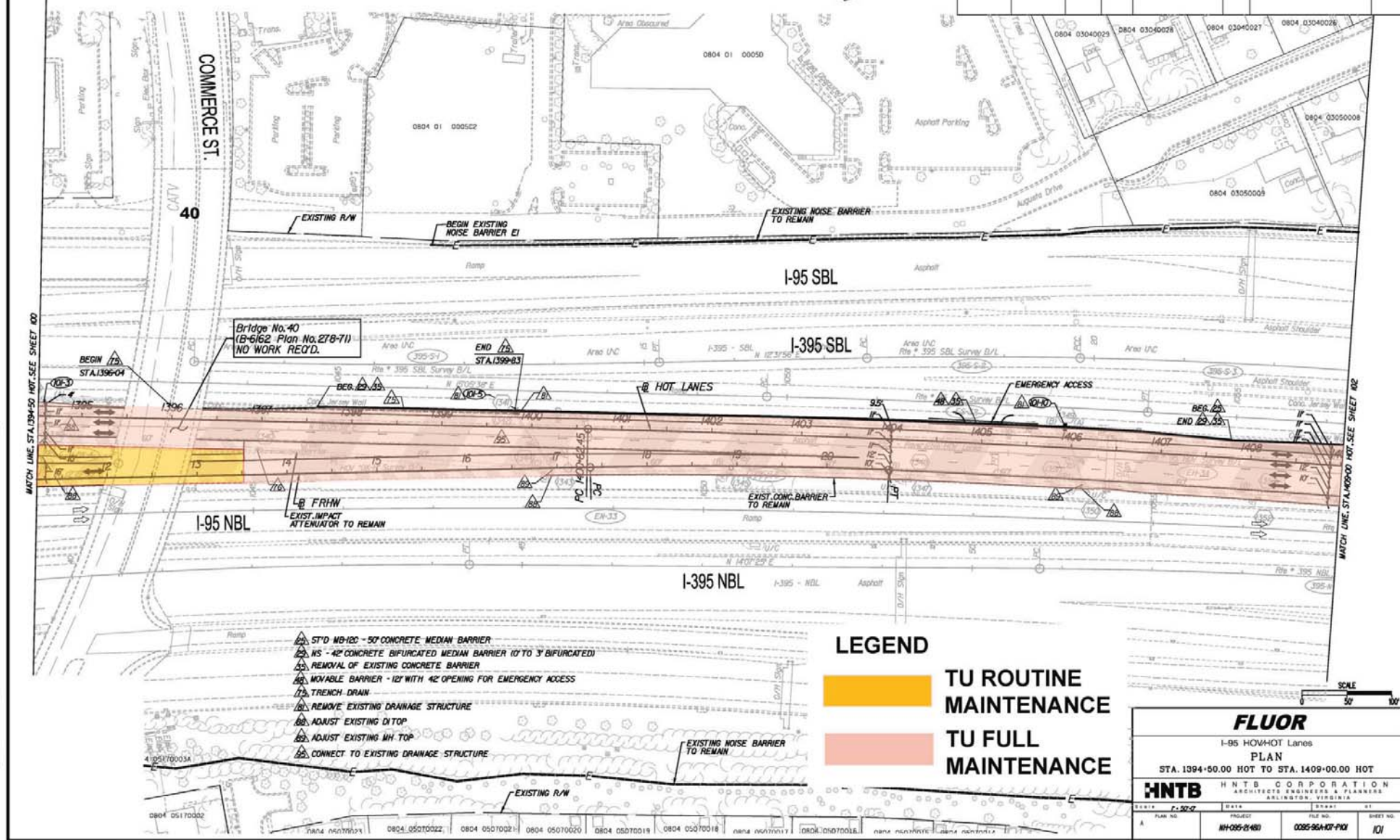
SCALE	1" = 50'-0"
PLAN NO.	NH-095-2(481)
PROJECT	0095-96A-107-PI01
FILE NO.	99

LIMITED ACCESS HIGHWAY

By Resolution of Commonwealth Transportation Board dated January 18, 2001

REVISION	DATE	FEDERAL AID REGION	STATE	FEDERAL AID PROJECT	STATE PROJECT	SHEET NO.
		3	VA	NH-095-2(481)	95	0095-96A-107-PI01
						101

PROJECT MANAGER: CHARLIE DODGE, PE - HNTB, CORP. - (703) 253-5937
 SURVEYED BY: RICHARD ZIEGLER - SURPASS & HNTB - (703) 431-5325
 DESIGN SUPERVISED BY: EDWARD ELEMORE, PE - HNTB, CORP. - (703) 253-5845
 DESIGNED BY: HNTB CORPORATION (703) 824-9000



Rev.	Date	Description

LEGEND

TU ROUTINE MAINTENANCE

TU FULL MAINTENANCE

FLUOR
 I-95 HOV-3 HOT Lanes
 PLAN
 STA. 1394+00.00 HOT TO STA. 1409+00.00 HOT

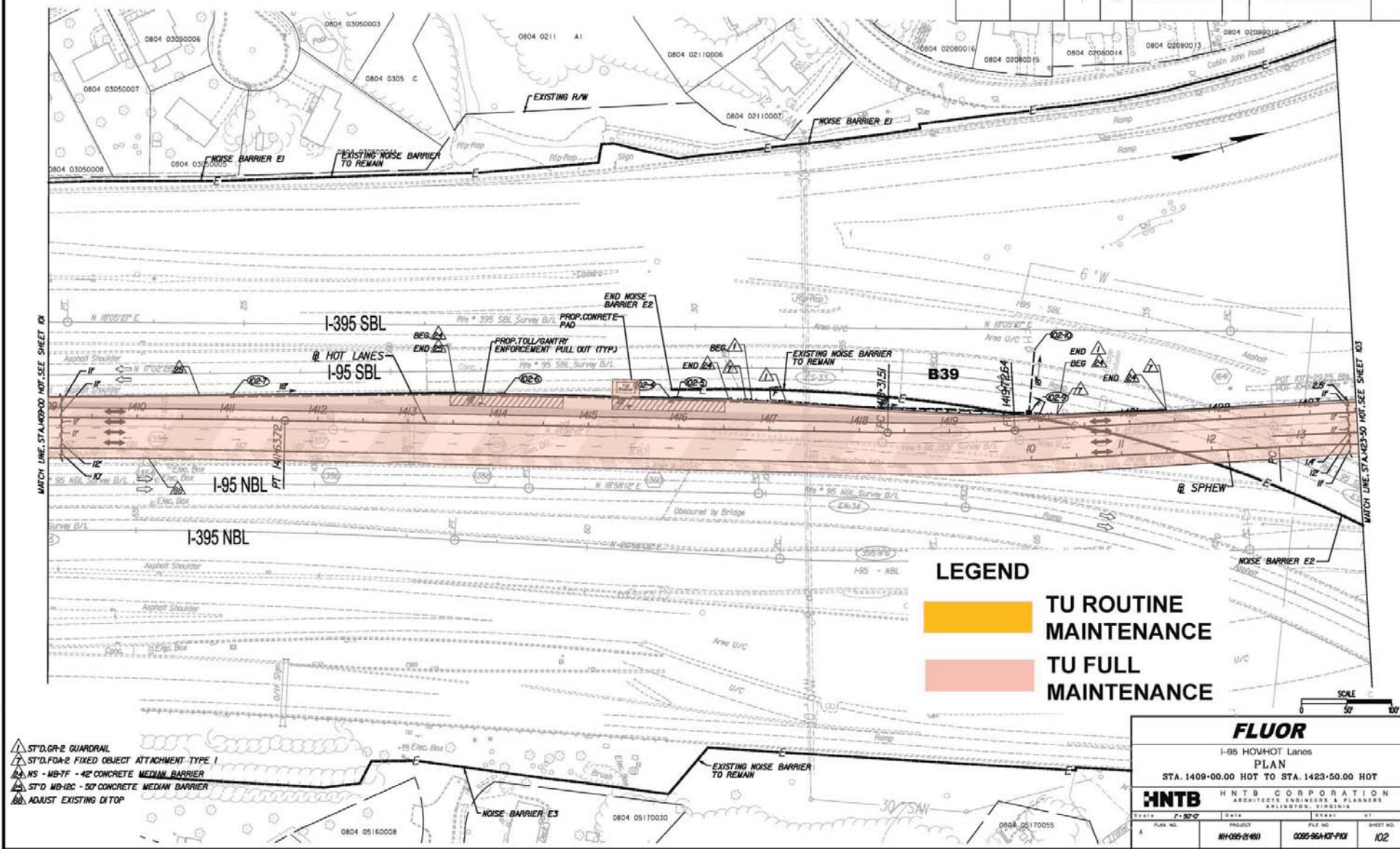
HNTB HNTB CORPORATION
 ARCHITECTS, ENGINEERS & PLANNERS
 ARLINGTON, VIRGINIA

DATE	FILE NO.	SHEET NO.
P. 09-09	0095-96A-107-PI01	101

LIMITED ACCESS HIGHWAY By Resolution of Commonwealth Transportation Board dated January 18, 2001

REVISION	DATE	FHWA REGION	STATE	FEDERAL AID PROJECT	ROUTE	STATE PROJECT	SHEET NO.
		3	VA	NH-095-2(481)	95	0095-96A-107-P101	102

PROJECT MANAGER: CHARLIE DODGE-PC - HNTB CORP. - (703) 253-9937
 SURVEYED BY: RICHARD ZIEGLER - BURGESS & NIELSEN - (703) 431-8328
 DESIGN SUPERVISED BY: THOMAS ELLIOTT-PC - HNTB CORP. - (703) 253-9945
 DESIGNED BY: HNTB CORPORATION (703) 884-9000



Rev.	Date	Description

- ▲ STD. GR-2 GUARDRAIL
- ▲ STD. FOA-2 FIXED OBJECT ATTACHMENT TYPE 1
- ▲ NS - MB-7F - 42" CONCRETE MEDIAN BARRIER
- ▲ STD MB-10C - 50" CONCRETE MEDIAN BARRIER
- ▲ ADJUST EXISTING D/TOP

LEGEND

TU ROUTINE MAINTENANCE

TU FULL MAINTENANCE

FLUOR
 I-95 HOV/HOT Lanes
 PLAN
 STA. 1409+00.00 HOT TO STA. 1423+50.00 HOT

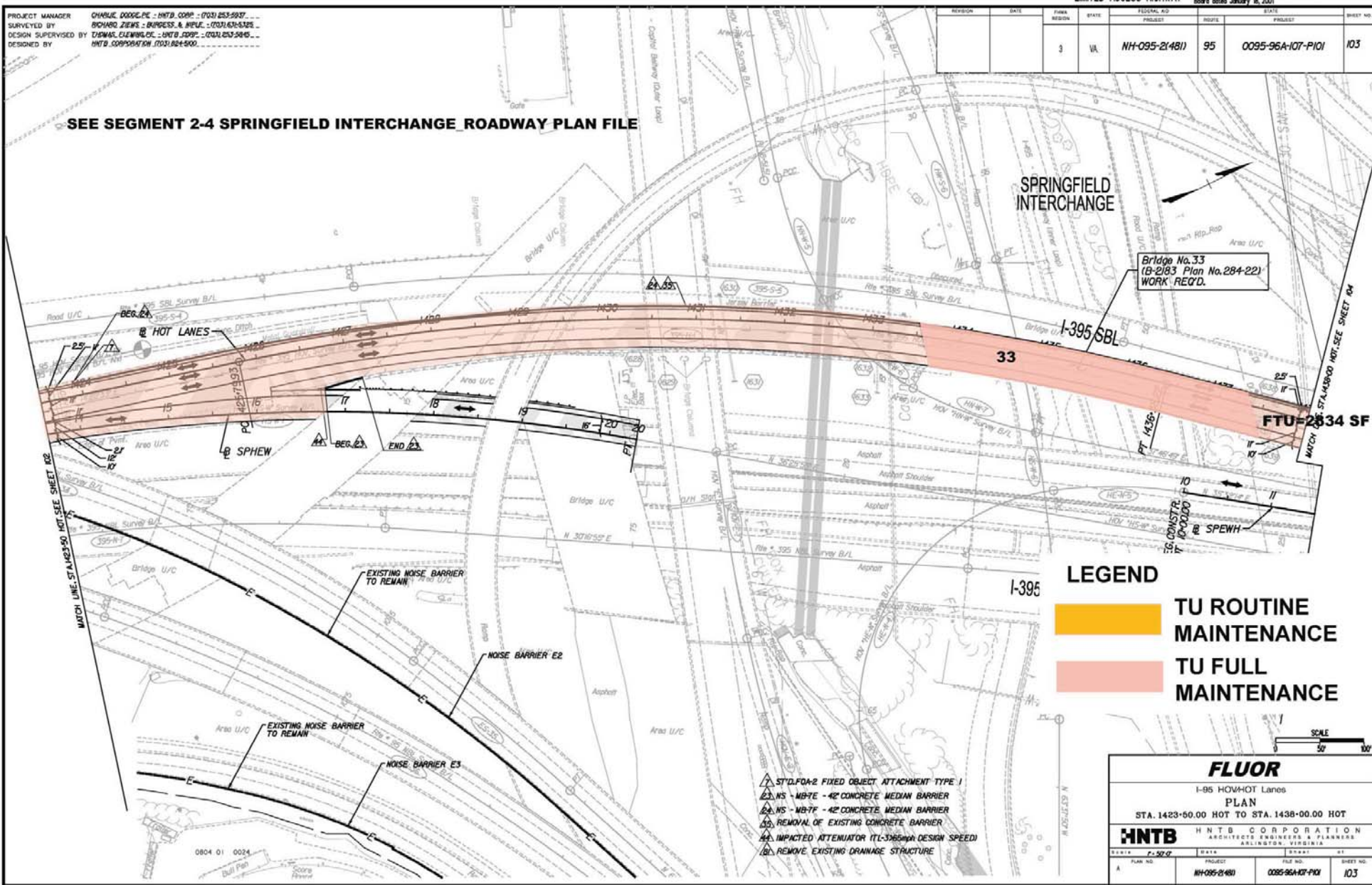
HNTB HNTB CORPORATION
 ARCHITECTS ENGINEERS & PLANNERS
 ARLINGTON, VIRGINIA

DATE: 7-82-9	DATE:	DATE:	DATE:
PLAN NO.:	PROJECT:	FILE NO.:	SHEET NO.:
NH-095-2(481)	0095-96A-107-P101		102

REVISION	DATE	FEDERAL AID PROJECT	STATE PROJECT	FEDERAL AID PROJECT	STATE PROJECT	SHEET NO.
3	VA	NH-095-2(481)	95	0095-96A-107-PI01	103	

PROJECT MANAGER: CHARLIE DODGE, P.E. - HNTB CORP. - (703) 253-5937
 SURVEYED BY: RICHARD ZIEHS - BURGESS & NIPLE - (703) 431-6326
 DESIGN SUPERVISED BY: EDWARD ELEMING, P.E. - HNTB CORP. - (703) 253-5845
 DESIGNED BY: HNTB CORPORATION - (703) 884-9000

SEE SEGMENT 2-4 SPRINGFIELD INTERCHANGE ROADWAY PLAN FILE



Rev.	Date	Description

LEGEND

TU ROUTINE MAINTENANCE

TU FULL MAINTENANCE

- ▲ STD.F0A-2 FIXED OBJECT ATTACHMENT TYPE 1
- ▲ NS - MB7E - 42" CONCRETE MEDIAN BARRIER
- ▲ NS - MB7F - 42" CONCRETE MEDIAN BARRIER
- ▲ REMOVE EXISTING CONCRETE BARRIER
- ▲ IMPACTED ATTENUATOR (TL-3000) (DESIGN SPEED)
- ▲ REMOVE EXISTING DRAINAGE STRUCTURE

FLUOR

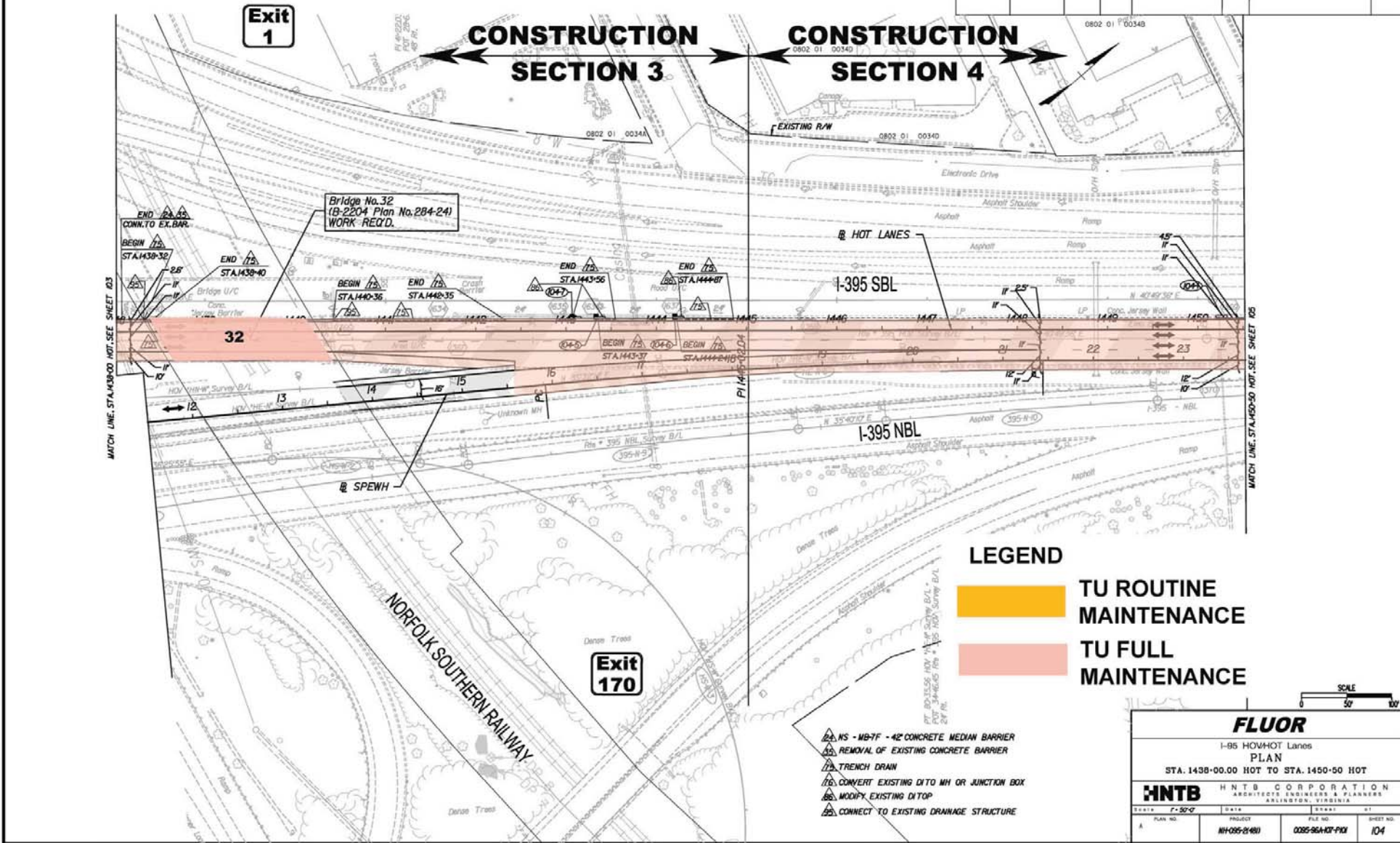
I-95 HOV-HOT Lanes
 PLAN
 STA. 1423+00.00 HOT TO STA. 1438+00.00 HOT

HNTB HNTB CORPORATION
 ARCHITECTS, ENGINEERS & PLANNERS
 ARLINGTON, VIRGINIA

PLAN NO.	PROJECT	FILE NO.	SHEET NO.
NH-095-2(481)	0095-96A-107-PI01		103

REVISION	DATE	FHWA REGION	STATE	FEDERAL AID PROJECT	ROUTE	STATE PROJECT	SHEET NO.
		3	VA	NH-095-2(481)	95	0095-96A-107-PI01	104

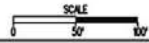
PROJECT MANAGER CHARLIE DODD, P.E. - HNTB, CORP. - (703) 253-9937
 SURVEYED BY RICHARD ZIEGLER - BURDESS & HIRSH - (703) 431-6328
 DESIGN SUPERVISED BY THOMAS ELEMING, P.E. - HNTB, CORP. - (703) 253-5845
 DESIGNED BY HNTB CORPORATION (703) 884-9000



Rev.	Date	Description

LEGEND

- TU ROUTINE MAINTENANCE
- TU FULL MAINTENANCE



FLUOR

I-95 HOV/HOT Lanes
 PLAN
 STA. 1438+00.00 HOT TO STA. 1450+50 HOT

HNTB HNTB CORPORATION
 ARCHITECTS, ENGINEERS & PLANNERS
 ARLINGTON, VIRGINIA

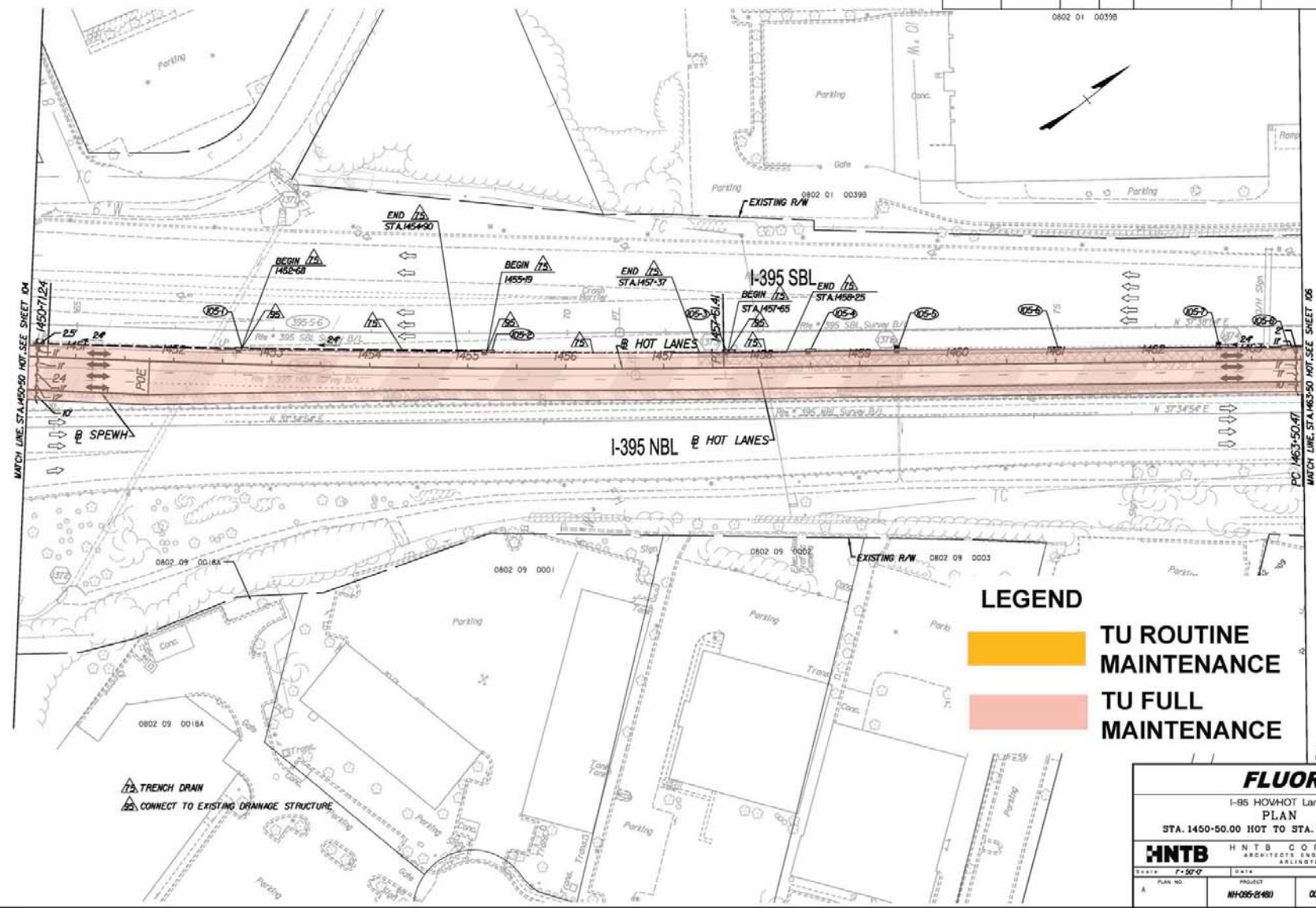
SCALE	DATE	DRAWN	BY
PLAN NO.	PROJECT	FILE NO.	SHEET NO.
A	NH-095-2(481)	0095-96A-107-PI01	104

LIMITED ACCESS HIGHWAY

By Resolution of Commonwealth Transportation Board dated January 18, 2001

REVISION	DATE	FHWA REGION	STATE	FEDERAL AID PROJECT	ROUTE	STATE PROJECT	SHEET NO.
		3	VA	NH-095-2(481)	95	0095-96A-107-PI01	105

PROJECT MANAGER CHARLIE DODGE-PC - HNTB CORP. - (703) 253-5937
 SURVEYED BY RICHARD ZIEMAS - BURGESS & NIELSEN - (703) 431-8328
 DESIGN SUPERVISED BY THOMAS CLEWING-PC - HNTB CORP. - (703) 253-5945
 DESIGNED BY HNTB CORPORATION (703) 884-9000

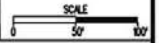


Rev.	Date	Description

LEGEND

TU ROUTINE MAINTENANCE

TU FULL MAINTENANCE



FLUOR

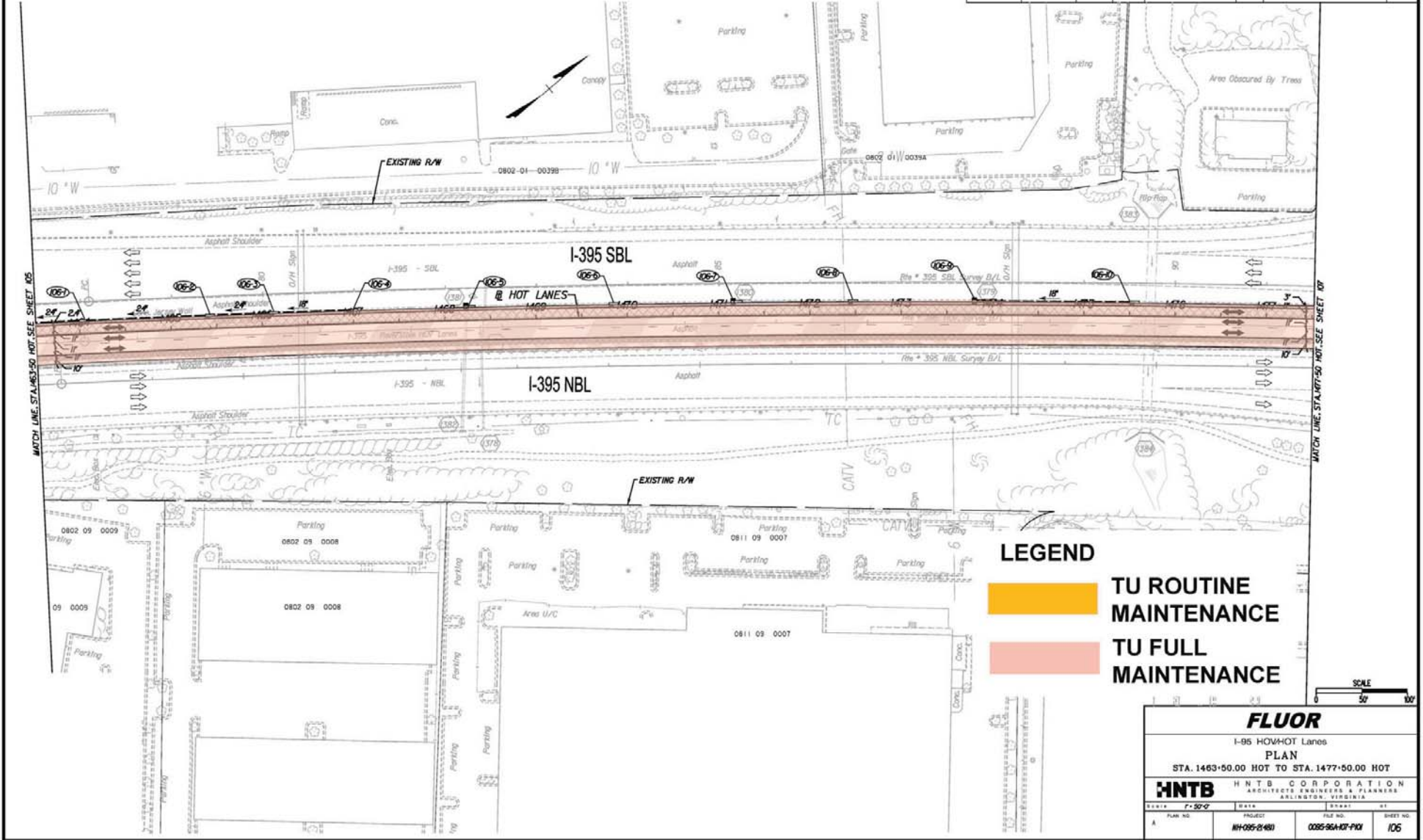
I-95 HOV/HOT Lanes
 PLAN
 STA. 1450+00.00 HOT TO STA. 1463+00.00 HOT

HNTB HNTB CORPORATION
 ARCHITECTS, ENGINEERS & PLANNERS
 ARLINGTON, VIRGINIA

SCALE	1" = 50'-0"	DATE	DATE	DRW	BY
PLAN NO.	NH-095-2(481)	PROJECT	FILE NO.	0095-96A-107-PI01	SHEET NO.
					105

PROJECT MANAGER CHARLIE DOOLEY, PE - HNTB, CORP. - (703) 853-5937
 SURVEYED BY RICHARD ZIEGLER, SURVEYOR & MEASURER - (703) 431-5125
 DESIGN SUPERVISED BY EDWARD ELLIOTT, PE - HNTB, CORP. - (703) 253-5815
 DESIGNED BY HNTB CORPORATION (703) 824-9000

REVISION	DATE	FEDERAL AID REGION	STATE	FEDERAL AID PROJECT	STATE PROJECT	SHEET NO.
		3	VA	NH-095-2(481)	95 0095-96A-107-P101	106



Rev.	Date	Description

LEGEND

TU ROUTINE MAINTENANCE

TU FULL MAINTENANCE

SCALE 1" = 50'

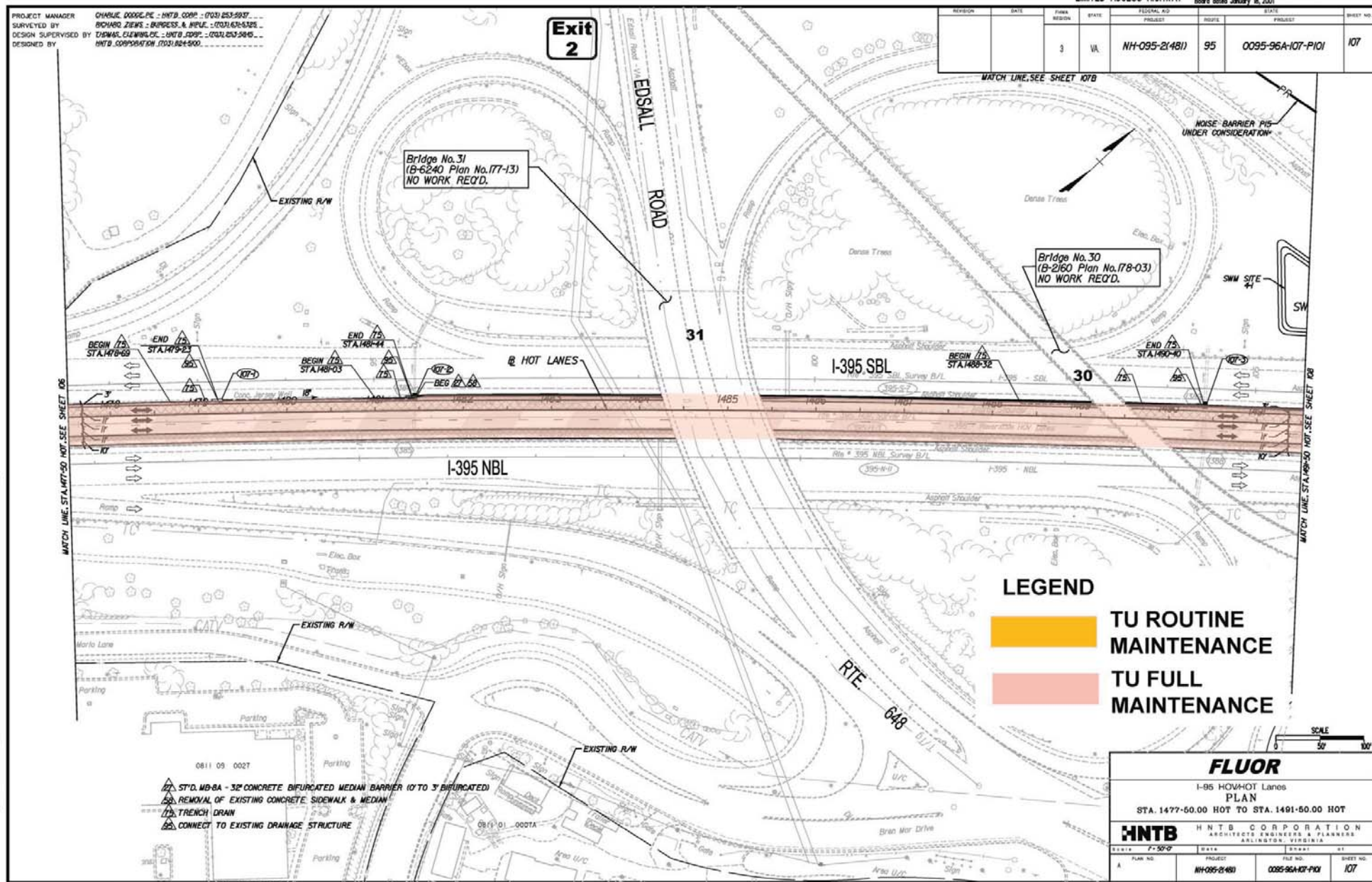
FLUOR

I-95 HOV-HOT Lanes
 PLAN
 STA. 1463+50.00 HOT TO STA. 1477+50.00 HOT

HNTB HNTB CORPORATION
 ARCHITECTS, ENGINEERS & PLANNERS
 ARLINGTON, VIRGINIA

SHEET	DATE	DRAWN	BY
A	7-20-09		
PLAN NO.	PROJECT	FILE NO.	SHEET NO.
	NH-095-2(481)	0095-96A-107-P101	106

REVISION	DATE	FEDERAL AID PROJECT	STATE PROJECT	FEDERAL AID PROJECT	STATE PROJECT	SHEET NO.
		3	VA	NH-095-2(481)	95	0095-96A-107-P101
						107



Rev.	Date	Description

LEGEND

TU ROUTINE MAINTENANCE

TU FULL MAINTENANCE

- 0811 09 0027
- 0811 01 0007A
- STD. MB-8A - 32" CONCRETE BIFURCATED MEDIAN BARRIER (0 TO 3' BIFURCATED)
- REMOVAL OF EXISTING CONCRETE SIDEWALK & MEDIAN
- TRENCH DRAIN
- CONNECT TO EXISTING DRAINAGE STRUCTURE

FLUOR

I-95 HOV-HOT Lanes
 PLAN
 STA. 1477+50.00 HOT TO STA. 1491+50.00 HOT

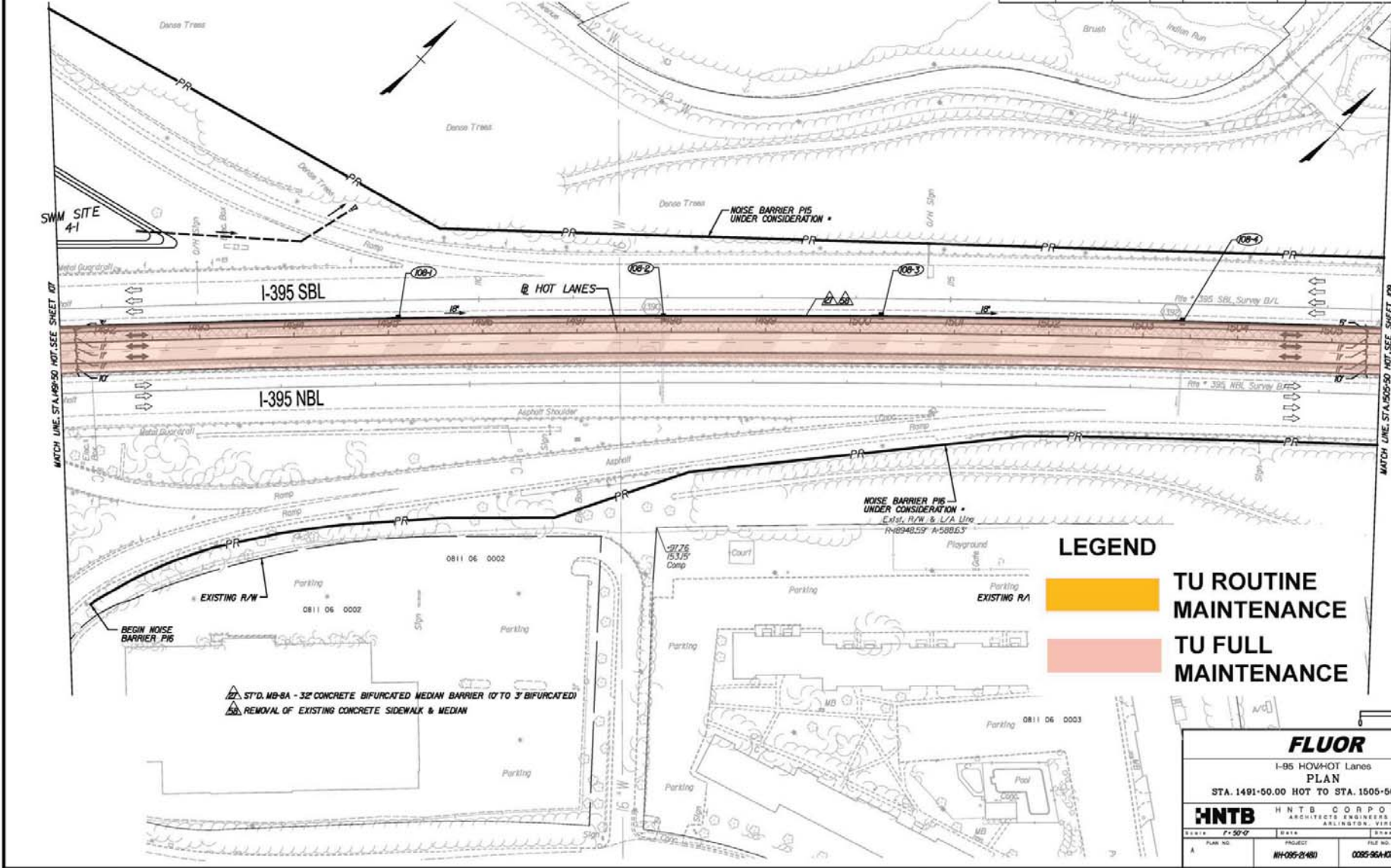
HNTB HNTB CORPORATION
 ARCHITECTS, ENGINEERS & PLANNERS
 ARLINGTON, VIRGINIA

PLAN NO.	PROJECT	FILE NO.	SHEET NO.
NH-095-2(481)	0095-96A-107-P101		107

LIMITED ACCESS HIGHWAY By Resolution of Commonwealth Transportation Board dated January 18, 2001

REVISION	DATE	FEDERAL AID REGION	STATE	FEDERAL AID PROJECT	ROUTE	STATE PROJECT	SHEET NO.
		3	VA.	NH-095-2(481)	95	0095-96A-107-PI01	108

PROJECT MANAGER CHARLIE DODD, PE - HNTB, CORP. - (703) 253-5937
 SURVEYED BY RICHARD ZIEGLER - BURGESS & NIPLE - (703) 431-5325
 DESIGN SUPERVISED BY EDWARD ELEMORE, PE - HNTB, CORP. - (703) 253-5945
 DESIGNED BY HNTB CORPORATION (703) 824-9000



LEGEND

- TU ROUTINE MAINTENANCE
- TU FULL MAINTENANCE

MATCH LINE, STA. 1491+50.00 HOT, SEE SHEET 09

MATCH LINE, STA. 1505+50.00 HOT, SEE SHEET 109

Rev.	Date	Description

- ST'D. MB-8A - 32" CONCRETE BIFURCATED MEDIAN BARRIER (0 TO 3' BIFURCATED)
- REMOVAL OF EXISTING CONCRETE SIDEWALK & MEDIAN

SCALE
0 50' 100'

FLUOR

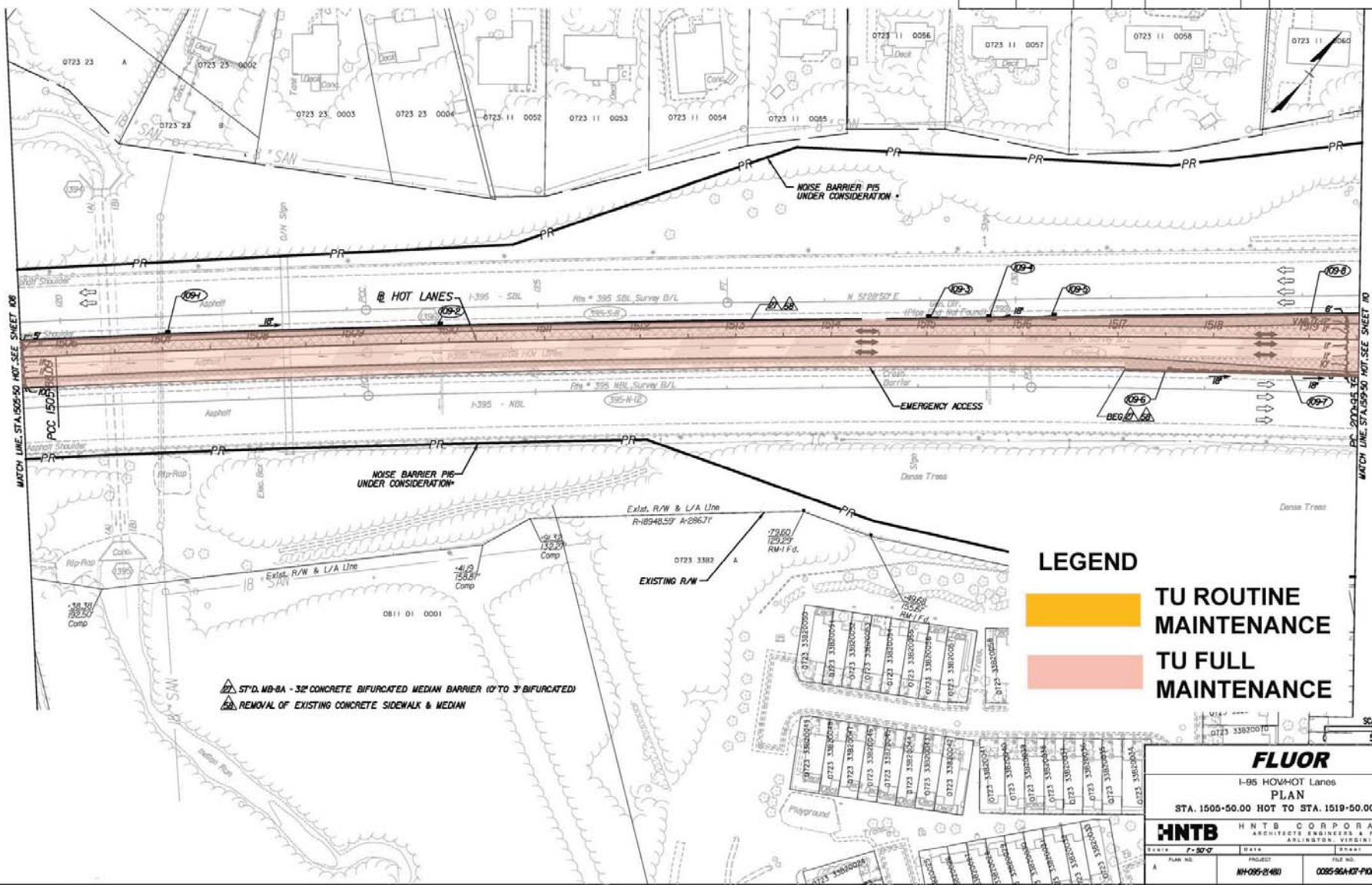
I-95 HOV-HOT Lanes
 PLAN
 STA. 1491+50.00 HOT TO STA. 1505+50.00 HOT

HNTB HNTB CORPORATION
 ARCHITECTS, ENGINEERS & PLANNERS
 ARLINGTON, VIRGINIA

DATE	DATE	DATE	DATE
PLAN NO.	PROJECT	FILE NO.	SHEET NO.
A	NH-095-2(481)	0095-96A-107-PI01	108

PROJECT MANAGER CHARLIE DOOLEY - HNTB CORP. - (703) 253-5937
 SURVEYED BY RICHARD ZIEKS - BURGESS & NIPLE - (703) 431-6326
 DESIGN SUPERVISED BY EDWARD ELEVINGOR - HNTB CORP. - (703) 253-5945
 DESIGNED BY HNTB CORPORATION (703) 824-9000

REVISION	DATE	AREA	STATE	FEDERAL AID PROJECT	ROUTE	STATE PROJECT	SHEET NO.
		3	VA	NH-095-2(481)	95	0095-96A-107-PI01	109



Rev.	Date	Description

LEGEND

TU ROUTINE MAINTENANCE

TU FULL MAINTENANCE

FLUOR

I-95 HOV-HOT Lanes
PLAN
STA. 1505+00.00 HOT TO STA. 1519+00.00 HOT

HNTB HNTB CORPORATION
ARCHITECTS, ENGINEERS & PLANNERS
ARLINGTON, VIRGINIA

SCALE	1" = 50'-0"
PROJECT	NH-095-2(481)
FILE NO.	0095-96A-107-PI01
SHEET NO.	109

